

# ISA Asia-Pacific Region Conference 2023, Tokyo

## GLOBAL ROLE OF ASIA-INDO PACIFIC IN INTERNATIONAL RELATIONS:

**-ANTHROPOCENE, PEACE AND SECURITY-** 10 VARIOUS SESSIONS: Covid-19 Pandemic; Regional Integration and Collaboration; Security, Geopolitics, and Energy Policy; Democracy and Authoritarianism: The Russo-Ukrainian War & the Crisis in East Asia; Religion and Philosophy; Gender Studies; History of War and Peace and Academic Collaboration; Global South and others. August 8-10, 2023, Waseda University, Tokyo



Waseda University: University Campus,  
Rihga Royal Reception Room,

Ibuka International Congress Hall,  
Conference rooms :Building of School of Political Science  
and Economics: Third Building



# ISA Asia-Pacific 2023 Conference, Tokyo, Waseda University -



*ISA Asia Pacific Tokyo Conference, 2023 will be held at Waseda University, Tokyo on August 8-10, 2023, two years later after Tokyo Olympic 2021. The title is: **Global Role of Asia-Indo Pacific in International Relations : Anthropocene, Peace and Security**. Please join us, from all over the world! We expect 400-500 researchers will have presentations, including graduate students' poster sessions. We hope to join face to face excellent meeting together after Covid-19. Mainly face to face, online also possible.*

***We are also preparing an excellent reception and tours after the conference, please join us!***

***We hope to see you in Tokyo in August!**     <https://www.japan.travel/en/>*

***ISA AP Tokyo Conference:** <https://www.isanet.org/Conferences/AP-Tokyo-2023>*

***Call for papers:** <https://www.isanet.org/Conferences/AP-Tokyo-2023/Call>*

***Submission of proposals:** <https://www.isanet.org/Conferences/AP-Tokyo-2023/Submissions>*

**CONFERENCE ORGANIZERS** : ISA Asia Pacific President: Kumiko Haba, Aoyama Gakuin University, Harvard University

**Program Chairs:** Pradeep Singh Chauhan, Kurukshetra University, Soavapa Ngampramuan, Ramkhamhaeng University

**Conference Host:** Hajime Okusako, Yoshie Hori, Waseda University

**ISA Asia Pacific Region Ex Com-members:** **President:** Kumiko Haba, Aoyama Gakuin University

**Vice Presidents:** Jian Zhang, UNSW Canberra, Atsuko Watanabe, Kanazawa University, **Treasurer:** Ching Chang Chen, Ryukoku University, **Member at Large:** Nassef Manabilang Adiong, University of the Philippines, Diliman. (UPD),

Soavapa Ngampramuan, Ramkhamhaeng University, **Membership Secretary:** Pradeep S. Chauhan, Kurukshetra University,

**Graduate student Representative:** Dr. Akanksha Singh, Temple University

## All Program Contents on ISA Asia Pacific Tokyo Conference 2023

### 0. Poster for the ISA Asia Pacific

#### 1. Welcome Remarks from Organizers: (paper)

Waseda University Hosts, ISA AP Organizers, ISA Head Quarters

#### 2. ISA AP Tokyo 2023, Joint Meeting Program

Welcome Joint Meeting : Welcome Speech and Keynote Speech; August 8<sup>th</sup>

10:00-12:00 am, Ibuka International Conference Hall (in person and virtual)

Welcome Remarks:

Masahiko Gemma, Vice President, Waseda University

Takaaki Kajita, President of Japan Science Council(JSC), University of Tokyo

Juichi Yamagiwa, Former President of Japan Science Council(JSC), Kyoto University

Kumiko Haba, ISA AP President, Aoyama Gakuin University

Keynote Speech:

Ichiro Fujisaki, President, America-Japan Society Inc. Former Ambassador to the United States

Joseph Nye, Deputy to the Under Secretary of State, Carter Administration, Former Dean of Kennedy School at Harvard University,

Amitav Acharya, Former President of ISA(2014-15), American University

T.V. Paul, Former President of ISA(2016-17), McGill University

#### 3. ISA AP Tokyo 2023, Joint Welcome Reception; August 9<sup>th</sup> 19:10-21:10,

Royal Hall, 3<sup>rd</sup> Floor, Rihga Royal Hotel Tokyo (in person)

All registered members are invited. (Registration is needed)

Welcome remarks:

Vice President Masahiko Gemma,

President of ISA AP, Kumiko Haba,

Hajime Okusako & Yoshie Hori, Waseda University

Pradeep Chauhan, Jawaharlal Nehru University,

Soavapa Ngampramuan, Ramkhamhaeng University, Program Chairs

Japanese traditional instruments, Playing the Koto and Shakuhachi

#### 4. ISA AP Tokyo 2023,

Joint Meeting: Round Table 13:00-14:30, 14-201, on August 9<sup>th</sup> (in person)

Young Generation Performance: War and Peace in History and International Relations

5. ISA AP Tokyo 2023,  
Joint Meeting: Distinguished Professors Round Table 13:00-14:30, 14-201, on  
August 10<sup>th</sup> (in person and virtual)  
“How to create Peace, Stability and Prosperity in Asia Pacific? Viewed from  
China, India, Korea, Japan, the USA/and the EU”  
Chaired by Ichiro Fujisaki, President of America-Japan Society, Inc, Panelists
6. ISA AP Tokyo 2023, Program: Each Panels
7. ISA AP Tokyo 2023, Participant Index
8. ISA AP Tokyo 2023, Sponsorship Index
9. Maps: Tokyo Metro Map
10. Waseda University Access Map
11. Waseda University Campus Map 1
12. Waseda University Campus Map 2
13. Guidance from the Host University
14. Publications for International Relations and Regional Studies



## WELCOME SALUTE: WASEDA UNIVERSITY HOST



Masahiko Gemma, Vice President at Waseda University]

Greetings from Waseda University! Representing the Waseda community, I would like to welcome all the delegates for the ISA Asia-Pacific Region 2023 Conference in Tokyo. It is very honorable to have an opportunity to invite many researchers across the regions and to provide a forum to get together, discuss and interact, just in an era when Asia has been taking an increasingly important role in the world. We hope that your time at Waseda University is professionally rewarding. We also wish you a wonderful stay in Japan.



Hajime Okusako, Professor at Waseda University

Welcome to Waseda! It is a great pleasure for us, all of the faculty and staff members, to hold ISA Asia-Pacific Region Conference 2023, Tokyo, at Waseda. I also feel so honored to serve as a conference host. We will do our best and all I can so that you can have a fruitful time during this conference. I wish you enjoy your stay in Tokyo to the fullest!

Yoshie Hori, Professor at Waseda University

WELCOME SALUTES: ISA Asia Pacific Ex Com members



Kumiko Haba, President of ISA Asia Pacific Region  
Professor Emeritus at Aoyama Gakuin University, Harvard University

Dear All Participants scholars, More than 850 excellent researchers, mid-careers, females, and young researchers from all over the world applied for ISA Asia Pacific, and over 500 excellent researchers gathered to hold the Asia Pacific Tokyo Conference after COVID-19. I am so much grateful to all of you from the bottom of my heart.

Everyone in the Asia Pacific Program Chairs and Ex .Com members has worked so dedicatedly. I would also like to express my sincere gratitude to the host of Waseda University for providing a wonderful venue and for their efforts.

I hope that communication with many scholars from around the world at this year's ISA Asia Pacific Conference, and especially the cooperation of the Global South, will lead to further future development of Asia-Indo-Pacific and ISA, and I wish you all the best in your research and communications.



Pradeep Chauhan, Program Chair  
Professor , CESP, SSS, Jawaharlal Nehru University, New Delhi, India

**On behalf of the Organising team, it is my pleasure to welcome all of the great academicians, young researchers, Business delegates, and students from all over the world, to attend the ISA Asia-Pacific Region Conference 2023 at Tokyo, Japan on the title 'Global Role of Asia-Indo Pacific in International Relations: Anthropocene, Peace and Security'.**

**There will be so many professionals and presenters in this conference from all over the world with Keynote talks and invited speakers, technical sessions, poster presentations and also, we will have the special sessions for graduate students encouraging young researchers. We hope that this conference will be productive and satisfying. Personally, I hope that you have a very enjoyable and entertaining stay here, in Tokyo, Japan.**



Soavapa Ngampramuan, Program Chair, Ramkhamhaeng University

It is great pleasure to welcome all of distinguished delegates to ISA PA Tokyo Conference from 8<sup>th</sup> - 10<sup>th</sup> August 2023. I assure that this conference will prove to be fruitful and informative for all the members participating in the conference. With more than 500 people participating with exquisite skills and experiences to share with us, I am sure this conference will truly exude the diverse spirit and will be an immense success. And Thank you to all volunteers and also Waseda University who have worked with us to help make this event a success and will continue to do so by resolving any queries you may have during the conference. With that, I would like to wish you all a great day ahead and I hope you have a great learning experience.



Jian Zhang, Vice-President, UNSW Canberra

A warm welcome to all the attendees to the 2023 ISA Asia-Pacific Regional Conference. Wish all of you have a joyful and enriching time at the conference. A massive thank you to the organizing team, conference host, and volunteers for all your hard work to make the event possible.

Atsuko Watanabe, Vice-President, Kanazawa University

Ching-Chang Chen, Secretary-Treasurer, Ryukoku University

Nassef Manabilang Adiong, Member-at-Large, University of the Philippines Diliman

Akanksha Singh, Graduate Student Representative, Jawaharlal Nehru University



## Tuesday

### TC02: Tuesday 1:30 PM - 3:00 PM

*In-Person Panel*

#### international security

*4. Security, Geopolitics, and Energy Policy*

Room: 3-405, Waseda University

**Chair** Satoshi Mizobata (Kyoto University)

**Disc.** Hidekazu Sakai (Kansai Gaidai University)

China in Vietnam's Omnidirectional Strategy

**Barbara Kratiuk (University of Warsaw)**

National Narratives around China's Belt and Road Initiative

**Ivan W. Rasmussen (New York University-Shanghai)**

Terrorist Rehabilitation Strategies in Asia: A Comparative Case Study of Bangladesh, Indonesia, and Sri Lanka

**ASM Ali Ashraf (University of Dhaka)**

"The People" versus "The Elite" at the United Nations Security

Council : Contemporary Global Populism and the Liberal

International Security Order

**Johny Arokiaaraj P (XIM University)**

Japan's Energy and Climate Change Policy Challenges since 2011

**Peter J Hudson (University of Delhi)**

Changing Dynamics of Global Energy Security and Renewable

Energy: A Geopolitical Perspective

**Dr. Geetanjali Singh (ICSSR, New Delhi)**

### TC05: Tuesday 1:30 PM - 3:00 PM

*In-Person Panel*

#### Reconciliation and Peace in East Asia especially Ryukyu governance

*8. History of War and Peace*

Room: 7-207, Waseda University

**Chair** Motoko Shuto (University of Tsukuba)

**Disc.** Jahyun Chun (Yonsei University)

Middle Powers Integrating in 'Other' Regions: The Cases of Turkey, Saudi Arabia, and the Shanghai Cooperation Organization

**Nukhet A. Sandal (Ohio University)**

EU Strategy for Cooperation in the Indo-Pacific: an Expansive

Foreign Policy to Cultivate and Contain

**Tipparat Bubpasiri (Ramkhamhaeng University)**

A Critical Analysis on the Maritime Silk Road and Indo-Pacific Strategy: Regional Integration and Diplomatic Shifts in the Context of China-US Relations

**Hak Yin Li (Tokyo International University)**

The Gulf War and the "Discovery" of Self-Defense Forces Overseas Deployment: Changes in the Japan-U.S. Security System at the End of the Cold War

**Hiroaki Kato (Kwansei Gakuin University)**

Private Diplomacy Action in the process of the Okinawa reversion and Okinawa after the Return of Administrative Authority

**Megumi Kamiya (Okinawa International University)**

Actions of the Ryukyu Government and the civil movement in the stage of the Okinawa Reversion

**Tetsumi TAKARA (House of Councillors)**

**Megumi Kamiya (Okinawa International University)**

### TC06: Tuesday 1:30 PM - 3:00 PM

*In-Person Panel*

#### India: A Future Hegemon in Making

*3. Regional Integration and Collaboration in Asia-Indo Pacific, Europe and the World*

Room: 3-701, Waseda University

**Chair** SUNIL KUMAR (SOUTH ASIAN UNIVERSITY)

**Disc.** Christian Ploberger (Rajamangala University of Technology Tawan-OK)

Japan's Science and Technology Diplomacy: An International Tool for the FOIP Vision

**Juan Luis Lopez Aranguren (University of Zaragoza (Spain))**

"Beyond the Western Perspective: Exploring Southeast Asia's Responses to the Cambodian Genocide"

**Rishab Chatty (Arizona State University)**

Power transformation theory and India (Dr. Ploberger)

**Christian Ploberger (Rajamangala University of Technology Tawan-OK)**

India: A Future Hegemon in Making

**Dr Akanksha Singh (Sri Guru Gobind Singh College PU)**

### TC07: Tuesday 1:30 PM - 3:00 PM

*In-Person Panel*

#### Irregular Warfare in the Indo-Pacific: Concepts and Case Studies 2

*3. Regional Integration and Collaboration in Asia-Indo Pacific, Europe and the World*

Room: 3-702, Waseda University

**Chair** Joshua Hastey (Regent University)

**Disc.** Joshua Hastey (Regent University)

Go West, Look East: India's Growing Ties with the Gulf Ties

**Varsha Koduvayur (Irregular Warfare Center)**

Porcupines, Poisonous Shrimp, and Hedgehogs: A comparative study of national security strategies in Taiwan, Singapore, and Vietnam

**Patricia Blocksome (U.S. Naval War College-Monterey)**

Signaling and the Inverted Logic of Maritime Gray Zone Operations

**Joshua Hastey (Regent University)**

Irregular Warfare in the Indo-Pacific: Examining the Role of Quasi Non-State Actors

**Sam Mullins (Daniel K. Inouye Asia-Pacific Center for Security Studies)**

### TC10: Tuesday 1:30 PM - 3:00 PM

*In-Person Panel*

#### indo-pacific strategy

*10. Papers of Graduate Students*

Room: 3-709, Waseda University

**Chair** Lidija Kos-Stanisic (University of Zagreb, Faculty of Political Science)

**Disc.** Chetna Rana (Kurukshetra University)

The SDGs implementation process in Asia Pacific Region, intermediate results.

**Olga Khanina (Foundation for International Projects Development named after Alexander Griboyedov)**

Alliances in the context of anxiety: The US's East Asia Alliance networks

**Catherine Jones (University of St Andrews)**

Regional Cooperation and Strategic Partnership in the Indo-Pacific:

Emerging Dimensions and Challenges in India's Relations with ASEAN

**P C PRASANNA KUMAR (Central University of Kerala)**

Indo Pacific Strategy: Bangladesh's Role of Balancing in light of Foreign Policy

**Ariful Haque (Government of Bangladesh)**

**TC11: Tuesday 1:30 PM - 3:00 PM**

*In-Person Panel*

**Religiosity/religious thought/religious actors in East Asian (international) politics**

*6. Religion and Philosophy*

Room: 7-212, Waseda University

**Chair** Kosuke Shimizu (Ryukoku University)

**Disc.** Ching-Chang Chen (Ryukoku University)

Christianity and twisted postcoloniality in South Korean politics  
**Jungmin Seo (Yonsei University)**

Does Pre-modern Korea's Confucian Thinking Rhyme with South Korean IR Studies Today?

**Young Chul Cho (Jeonbuk National University)**

On war and the idea of nothingness: the possibilities and dangers of the philosophy of contingency

**Kosuke Shimizu (Ryukoku University)**

Peacemaking across the Taiwan Strait: locating the agency of Fo Guang Shan and its implications for Cross-strait relations

**Tony Tai-Ting Liu (National Chung Hsing University)**

Zen at War: Perspectives from the Japanese Sōtō Zen

**Pei-ying Lin (National Chengchi University)**

**TC12: Tuesday 1:30 PM - 3:00 PM**

*In-Person Panel*

**Panel 2: Economic Growth and Women's work/labor in Asia** **Chair Yoshie HORI, Discussant Fumie Ohashi**

*7. Gender Studies*

Room: 7-205, Waseda University

**Chair** Yoshie HORI (Waseda University)

**Disc.** Yoshie HORI (Waseda University)

Female precarity in times of crisis

**Judit Hidasi (Budapest Business School)**

The Development of Private Financial Institutions and Over-inclusion in China

**YAJIAO LI (the Japan Society for the Promotion of Science)**

The development of the dairy industry and "women's work" in India  
**Yukiko Nakamura (Postdoctoral Fellow of JSPS (Yokohama National University))**

What Makes Mothers in Japanese Rural Areas Engaged in Business Process Outsourcing (BPO) Industry?

**Emi Ochiai (Gifu University)**

The labor shortage problem of China's domestic worker market and the acceptance of Filipino domestic workers ----the case of Philippine Maid Center A in China

**Chunyan Zu (Waseda University)**

**TC14: Tuesday 1:30 PM - 3:45 PM**

*In-Person Panel*

**Group 5: some other International Cooperation**

*10. Papers of Graduate Students*

Room: 3-710, Waseda University

**Chair** Laura Sjöberg (Royal Holloway, University of London)

**Disc.** Taku Tamaki (Loughborough University)

Venue linking in environmental negotiations: China's strategy to protect sea cucumbers

**Annie Young Song (Yonsei University)**

**Hubert Cheung (The University of Tokyo)**

Power Shift in Gaian Feedback System: U.S.-China Competition, Anthropocene, and the Case for Co-Adaptation

**Inho Choi (Bilkent University)**

International Partnership on Research, Development, Test & Evaluation (RDT&E) Projects of the U.S. Department of Defense

**Masataka Horiuchi (Graduate School, Takushoku University)**

Regional cooperation to resolve the Rohingya crises: A security perspective

**- TAMIMA (WASEDA UNIVERSITY)**

**TD02: Tuesday 3:15 PM - 4:45 PM**

*In-Person Panel*

**Geo- Political Uncertainty**

*4. Security, Geopolitics, and Energy Policy*

Room: 3-405, Waseda University

**Chair** Naoko Kumagai (Aoyama Gakuin University)

**Disc.** Chengxin Pan (University of Macau, China)

Germany between the United States and China

**Rafal Ulatowski (University of Warsaw)**

To Join or Not to Join? Public Preference toward the Quad in South Korea

**Songying Fang (Rice University)**

**Soyoung Lee (Stanford University)**

**Xiaojun Li (University of British Columbia)**

Exclusive Economic Zone and Cross-Border Externalities: Evidence from China's Fishing Moratorium

**Tao Li (University of Macau)**

**Qin Liu (University of Macau)**

The Future of Taiwan: A Strategic Comparison of the U.S. East Asia Strategy

**Hsin-Chi Lu (Graduate Institute of International Politics, NCHU (National Chung Hsing University))**

Maritime Security Challenges and Related Geo-political

Uncertainties: Are Submarines an Essential Response for Southeast Asian Nations?

**Marjorie Suriyamongkol (Researcher)**

**Walter N. Ziering (Researcher)**

**TD03-V: Tuesday 3:15 PM - 4:45 PM**

*Virtual Panel*

**An "Asia-Pacific Way" for humanitarian crises? Regional perspectives on the concepts of the "responsibility to protect (R2P)" and "non-indifference"**

*4. Security, Geopolitics, and Energy Policy*

Room: 3-406, Waseda University

**Chair** Shiro Komatsu (University of Yamanashi)

**Disc.** Noel M. Morada (University of Queensland)

**Disc.** Yukiko Nishikawa (Doshisha University)

Why "non-indifference" matters? Re-examining the ethico-political origin of the responsibility to protect (R2P) and the case of Latin America

**Hiroshi Nishikai (Seigakuin University)**

From "non-interference" to "non-indifference": Political context of the responsibility to protect (R2P) in Africa

**Mika Inoue-Hanzawa (Toyo Gakuen University)**

ASEAN's Response to Myanmar Humanitarian Crisis: From "non-interference" to "non-indifference"?

**Hiromu Miyashita (Meijo University)**

Modern Russia's Foreign Policy: How Successful is the Turn to the East?

**Konstantin Khudoley (St. Petersburg State University)**

---

**TD04: Tuesday 3:15 PM - 4:45 PM** *In-Person Panel***Reassessing Policies of Humanitarianism, displacement and Refugees in Asia and the Pacific**

9. Others: Japanology, Global South, Latin America

Room: 3-606, Waseda University

**Chair** Aigul Kulnazarova (Tama University, School of Global Studies)

**Disc.** Akanksha Singh (Temple University, Tokyo, Japan)

China's status-seeking in the global humanitarian system

**Lina Gong (Nanyang Technological University)**

Exploring the Characteristics of Japan's Modern Terrorism History: Analysis Based on the "Four Waves" Framework.

**Yoshiki Kobayashi (Meiji University)**

Depoliticizing Refuge: False choices in Urban Refugee programming across Asia-Pacific

**Udita Ghosh (University of California Irvine)**

India's Paradoxical Policies on Refugees: An Exploration of Protectionism and Politics in Displacement Governance

**Avantika Dureha (Jawaharlal Nehru University)**

---

**TD06: Tuesday 3:15 PM - 4:45 PM** *In-Person Panel***Relation between Asia and Western Word**

10. Papers of Graduate Students

Room: 3-701, Waseda University

**Chair** Karl Gustafsson (Stockholm University)

State-led capitalism and economic sanctions – Perspective of deglobalisation

**Satoshi Mizobata (Kyoto University)**

East Asian Regional Conflicts between China and the US, and Reconciliation with Neighbor countries--Make Okinawa to the Hub of Peace--

**Kumiko Haba (Aoyama Gakuin University, Harvard University)**

Global Britain? Southeast Asian Practitioner perceptions of the future of UK-ASEAN relations

**Robert Yates (University of Bristol)**

**Asmiati Malik (Universitas Bakrie)**

**Scott Edwards (University of Leeds)**

---

**TD07: Tuesday 3:15 PM - 4:45 PM** *In-Person Panel***Constructivism Approach**

5. Democracy and Authoritarianism; The Russo-Ukrainian War & the Crisis in East Asia

Room: 3-702, Waseda University

**Chair** Nassef Manabilang Adiong (Bangsamoro Transition Authority's Policy Research and Legal Services)

**Disc.** Vincent Casil (Policy Research and Legal Services)

Show Me the Money: Explaining State-building in Late 16th Century Japan

**Weiwen Yin (University of Macau)**

China's Rise and the Symbolic Challenge to Post-Enlightenment Subjectivity

**Dat Tan Nguyen (East China Normal University)**

The Relational Politics of Global Norm Contestation: Russia, the West, and the Struggle for Legitimacy at the UN General Assembly, 2005-2022

**Kazushige Kobayashi (Graduate Institute of International and Development Studies)**

Bringing Information Back In: Russia and the Use of Information Warfare in Pursuing Limited Aims

**Robert Maxwell (University of Washington)**

From Dictators to Democrats: The Evolution of Political Violence in South Korea

**Jonson Porteux (Kansai Gaidai University)**

**Sunil Kim (Kyung Hee University)**

---

**TD09: Tuesday 3:15 PM - 4:45 PM** *In-Person Panel***Bureaucracy and Globalization in the Indo-Pacific**

3. Regional Integration and Collaboration in Asia-Indo Pacific, Europe and the World

Room: 3-704, Waseda University

**Chair** Kosuke Shimizu (Ryukoku University)

**Disc.** Ching-Chang Chen (Ryukoku University)

The Asian Infrastructure Investment Bank (AIIB): Chinese Multilateralism and Challenges to International Order

**Ngipwem Rebecca Chohwanglim (Jawaharlal Nehru University)**

China and the Pacific Alliance: An Opportunity or An Obstacle for the Latin American Regional Digital Market?

**Karla Estephany Alvarado Romero (Heidelberg University)**

How Left-Right Party Preferences for Bureaucratic Design Shape Foreign Aid Allocation

**Esol Cho (Xi'an Jiaotong Liverpool University (XJTLU))**

When the Periphery Becomes the Center? Central and Eastern Europe as the Pivot of China-EU relations

**Emilian Kavalski (Jagiellonian University in Krakow (Poland))**

---

**TD11: Tuesday 3:15 PM - 4:45 PM** *In-Person Panel***Panel 5: Religion, Governance, and Securitization of Others**

6. Religion and Philosophy

Room: 7-212, Waseda University

**Chair** Young Chul Cho (Jeonbuk National University)

**Disc.** Jungmin Seo (Yonsei University)

Embracing the Order: Agriculture and the spread of Confucianism

**Christopher Paik (New York University Abu Dhabi)**

Religion, violence and language games in international relations: Mahathir, Thatcher and Salman Rushdie

**David Smith (University of Sydney)**

Islamophobia, Anti-immigrant Narratives and Securitization of Immigration in South Korea

**Byoungha Lee (University of Seoul)**

---

**TD14: Tuesday 3:15 PM - 4:45 PM** *In-Person Panel***The Politics of Memory and Civil Society: Toward a New Analytical Framework for the Korean-Japanese Conflict**

8. History of War and Peace

Room: 3-710, Waseda University

**Chair** Kan Kimura (Kobe University)

**Disc.** Sebastian Maslow (Sendai Shirayuri Women's College)

**Disc.** Yongmin Kim (Konkuk University)

The Role of Civil Society Organizations in the Politicization of Narratives on Pro-Japanese Collaborators: A Case Study of the Korean Independence Heritage

**TATSUYA MAISAWA (Kobe University)**

Japanese Citizen Movement Groups and Postwar Compensation Trials from the Viewpoint of the Intimate Sphere

**Sung Kim (Sapporo University)**

Does the Development of Civil Society Contribute to Conflict Resolution?: The Role of Non-governmental Organizations in the Korea-Japan Conflict

**Eunmi Choi (The Asan Institute for Policy Studies)**



The “Antagonistic Complicity” of Nationalist Groups in Japan and South Korea

**Katsumi Sawada (Mainichi Shimbun)**

---

**TE01: Tuesday 5:00 PM - 6:30 PM**

*In-Person Panel*

**Panel 3 Regional responses to China's rise**

*4. Security, Geopolitics, and Energy Policy*

Room: 3-404, Waseda University

**Chair** Hiroaki Ataka (Ritsumeikan University)

**Disc.** Yue Li (Kobe University)

Does Wolf Warrior Diplomacy Affect Public Approval of US-China

War? Evidence from Experimental Surveys

**Dongshu Liu (City University of Hong Kong)**

**Li Shao (Zhejiang University)**

**Kyungwon Suh (UC Institute on Global Conflict and Cooperation)**

Examining Vietnamese attitude toward China: Moving beyond the ‘anti-China’ framing

**Viet Hung Nguyen Cao (Waseda University)**

**Richard Q. Turcsanyi (Mendel University in Brno, the Czech Republic)**

The Role of ASEAN as a Regional Organization in ASEAN Member States-BRI Engagement

**MENGHU XIA (University of New South Wales )**

The War in Ukraine and Japan's Defense Budget Increase

**Koji Haraguchi (Yamanashi Gakuin University)**

---

**TE02: Tuesday 5:00 PM - 6:30 PM**

*In-Person Panel*

**Cooperation and competition in Indo-Pacific Region**

*4. Security, Geopolitics, and Energy Policy*

Room: 3-405, Waseda University

**Chair** T. V. Paul (McGill University)

**Disc.** Giorgio Shani (London School of Economics/ International Christian University)

China-Japan Third Party Cooperation in the Global South? Fanatical Enthusiasm and Geopolitical Reality Check

**Kenichi Doi (Waseda University)**

Investigating naval diplomacy in the Indo-Pacific: the role of multilateral naval exercises.

**Manuel Modoni (Ritsumeikan Asia Pacific University)**

The Diamond Necklace: Examining India's geostrategic vision to counterbalance China's territorial assertiveness in the Indo-Pacific

**Akash Bhagat (Jawaharlal Nehru University)**

**Torunika Roy (Jawaharlal Nehru University )**

---

**TE05: Tuesday 5:00 PM - 6:30 PM**

*In-Person Panel*

**In Pursuit of Historical Reconciliation in East Asia: Analysis from the Perspective of Postcolonialism**

*8. History of War and Peace*

Room: 7-207, Waseda University

**Chair** Kyoko Cross (Kyoto Sangyo University)

**Disc.** Barak Kushner (University of Cambridge)

**Disc.** Jahyun Chun (Yonsei University)

The Reality and Prospects of Inter-Korean Reconciliation through the Unification Perception Surveys

**Moonyoung Lee (Seoul National University)**

Rethinking Reconciliation in East Asia through Preservation and Regeneration of Japanese Colonial Structures in Present-day

Taiwan: A Case Study of “Shōwachō”

**Yoshihisa Amae (Independent scholar )**

Beyond the Positivist and Interpretive Divide in the Reconciliation Efforts over the Issue of Comfort Women between Japan and the Republic of Korea

**Naoko Kumagai (Aoyama Gakuin University)**

Correlation between South Korea-Japan Relations and Inter-Korean Relations: Challenges of Double Reconciliation

**Kijeong Nam (Seoul National University, Institute for Japanese Studies)**

Reconciliation Study as Conflict Resolution Study from East Asia:

With a Focus on the Relationship between Democratic Values and

Historical Memory in the Region

**Toyomi Asano (Waseda University)**

---

**TE06: Tuesday 5:00 PM - 6:30 PM**

*In-Person Roundtable*

**Civil Society Contribution to Building Regional Peace and Stability: The Experience of Northeast Asia**

*3. Regional Integration and Collaboration in Asia-Indo Pacific, Europe and the World*

Room: 3-701, Waseda University

**Chair** Tatsuya Yoshioka (Global Partnership for the Prevention of Armed Conflict (GPPAC))

**Disc.** Meri Joyce (Peace Boat / GPPAC)

**Part.** Meri Joyce (Peace Boat / GPPAC)

**Part.** Jargalsaikhan Enkhsaikhan (Blue Banner)

**Part.** Danning Wang (Belt and Road Culture Exchange Foundation for Women)

**Part.** Keindel Maha Vizcarra (Bangsamoro Transition Authority)

**Part.** Sumiko Hatakeyama (Peace Boat)

---

**TE07: Tuesday 5:00 PM - 6:30 PM**

*In-Person Panel*

**1) Taiwan Crisis and China**

*5. Democracy and Authoritarianism; The Russo-Ukrainian War & the Crisis in East Asia*

Room: 3-702, Waseda University

**Chair** Ronald Yi Xiu Wu (Columbia University)

**Disc.** Aleksei Chikhachev (Saint Petersburg State University, School of International Relations)

How Much Performance Can We Expect from Democracies at War in the Age of Hybrid Warfare? : Reviewing the Discussion of Regime Type Impact on Statecraft and Military Effectiveness.

**ABE YUKI (Aoyamagakuin University)**

Simulacrum Revisited: Mass Mobilization and Democratization in Chinese Entertainment Production

**Ronald Yi Xiu Wu (Columbia University)**

Computational Politics: Topic Analysis and Timing Series of the China Social Media on the Russian-Ukrainian War

**Hsuan-lei Shao (National Taiwan Normal University, Dept. East Asian Studies)**

---

**TE08: Tuesday 5:00 PM - 6:30 PM**

*In-Person Panel*

**Panel 1**

*2. Covid-19 Pandemic and International Relations*

Room: 3-703, Waseda University

**Chair** Mojtaba Mahdavi (University of Alberta)

**Disc.** Charles Chong-Han Wu (National Chengchi University)

An Expanded Notion of the 'Holistic Learning Space' : Perspectives from the Indonesian Education Sector

**Raymond Andaya (University of Tokyo)**

**Ai Kihara-Hunt (the University of Tokyo)**

**Kenya Winanti (Agence France-Presse)**

**Fathia Fairuza (Columbia University)**

Taiwan-Japan Relations in the Post-Abe Period: opportunities and challenges

**Tony Tai-Ting Liu (National Chung Hsing University)**

Evolution of Developmental States before and during the Pandemic:  
Diverging Paths of Joining Bilateral Investment Treaties between  
Japan and South Korea

**Ji Hye Lim (George Mason University Korea)**

CRISIS MANAGEMENT: COVID-19 REACTION, RESPONSE, AND  
RECOVERY ACROSS THE GLOBE

**Jani Ranasinghe (University of Colombo, California State  
University, Fullerton & Paris-10 Nanterre University )**

A World Without Peace: Reassessing the Threat of Trade  
Liberalization in Pandemic

**Hsun Chang (National Chung Hsing University)**

---

**TE09: Tuesday 5:00 PM - 6:30 PM**

*In-Person Panel*

**Public Diplomacy and Development**

*3. Regional Integration and Collaboration in Asia-Indo Pacific, Europe and the  
World*

Room: 3-704, Waseda University

**Chair** Rikard Jalkebro (Anwar Gargash Diplomatic Academy)

**Disc.** Jojin John (Mahatma Gandhi University, India)

The Department of State and the Study of the Conduct of  
Diplomacy: Case Study on Working with Australia and Japan to  
Create the Trilateral Partnership for Infrastructure Investment in the  
Indo-Pacific

**Cynthia Doell (U.S. Department of State)**

Sustaining Partnership Among Open Universities In Southeast Asia:  
The Experience of the ASEAN Studies Graduate Program

**Jean Saluadez (University of the Philippines Open University)**

How can government promote integration and collaboration while  
securing domestic interests in funding research and innovation?

**Hiroko Ueno (National Graduate Institute for Policy Studies)**

THE MODERNITY : AN ASSESSMENT - TOWARDS A GEOPOLITICS OF  
VALUES

**IVAN SAMSON (UNIVERSITY UVSQ PARIS)**

---

**TE10: Tuesday 5:00 PM - 6:30 PM**

*Poster Session*

**poster session**

*10. Papers of Graduate Students*

Room: 3-709, Waseda University

**Chair** Ivan W. Rasmussen (New York University-Shanghai)

**Disc.** Susan N. Engel (University of Wollongong)

EU Cultural Policy: the case of House of European History

**Chinatsu Yasuda (University of Tokyo)**

Attitudes toward Economic Sanctions and EU Norms in the Crimean  
Crisis

**Maho Tanoue (the University of Tokyo)**

Islam and Politics in Egypt after the 2011 Arab Spring: Focusing on  
the Analysis of Salafists as New Political Actors

**Yusaku Yoneda (Graduate School of International Relations,  
Ritsumeikan University)**

The Separation of Powers and the Position of Law in an "Ideal"

Islamic State: The Case of Hizb al-Tahrir

**Haruki Yamaoka (Keio University)**

The Russo-Ukrainian War and Antisemitism (as of 2023)

**Shoko Saeki (University of Exeter)**

---

**TE11: Tuesday 5:00 PM - 6:30 PM**

*In-Person Panel*

**Alliance Development**

*6. Religion and Philosophy*

Room: 7-212, Waseda University

**Chair** Takehito Kamata (Sophia University)

**Disc.** Kuyoun Chung (Kangwon National University )

Rewarding Loyalty: Selective Reassurance and Enforcement of  
Asymmetric Alliances

**Yasuki Kudo (University of Kentucky)**

China as a Builder of (Liberal?) International Order

**Matthew David Stephen (WZB Berlin)**

NEW GREAT GAME AND ENERGY GEOPOLITICS: RESPONSE OF  
RUSSIA, CHINA AND UNITED STATES

**BHAVYA PANDEY (Jawaharlal Nehru University)**

Do Private Military and Security Companies (PMSCs) Provide a New  
Window for India?

**Anuradha Oinam (Jawaharlal Nehru University, New Delhi)**

**Sanamacha Oinam (IGNOU)**

---

**TE12: Tuesday 5:00 PM - 6:30 PM**

*In-Person Panel*

**Panel 5: Lived Experiences of Chinese Women under Globalization:  
Focusing on their Struggles and Negotiations**

*7. Gender Studies*

Room: 7-205, Waseda University

**Chair** Fumie Ohashi (Institute for Gender Studies, Ochanomizu  
University)

**Disc.** Fumie Ohashi (Institute for Gender Studies, Ochanomizu  
University)

**Disc.** Yoshie HORI (Waseda University )

Women in conflict zone: Case of Chin Refugees from Myanmar in  
India

**K Esther Vaiphei (Manipur University)**

Gendered Life Course of Youth from Rural Hubei: Education and  
Career Path of "Born in the 1990s"

**YU LE (OCHANOMIZUJOSHU UNIVERSITY)**

Gender and Labor Relations in the Service Outsourcing Sector: The  
Case of Japan-China Offshore Industries in Dalian

**XINYU BI (Ochanomizu University)**

Engendering Postpartum Care in Shanghai: Women's Negotiations  
over Postpartum Body Management

**AOI SAITO (Graduate School of Social Sciences, Hitotsubashi  
University)**

Social Participation Practices of Chinese elder Women in Japan

Focusing on the Practices of Taiwanese Buddhist Temple

**TINGMEI MI (Ochanomizu University, Graduate School of  
Humanities and Sciences)**

---

**TE13: Tuesday 5:00 PM - 6:30 PM**

*In-Person Panel*

**indo-pacific strategies for peace**

*8. History of War and Peace*

Room: 7-206, Waseda University

**Disc.** Hiro Katsumata (Tohoku University, Japan)

The Indo-Pacific Strategy of the Korean Government

**Yongmin Kim (Konkuk University)**

China's Developmental Peace Versus Liberal Peace: A Critical Inquiry  
of the Dichotomy

**Yeonju Jung (Stockholm University)**

The UK's contribution to maritime security and oceans governance  
in the Indo-Pacific

**Catherine Jones (University of St Andrews)**

Strategic Leveraging of Diaspora Communities to Promote Security  
Objectives: A Look at U.S. Strategic Leveraging of it's Indian  
Diaspora Community to Bolster it's Security Position in the Indo-  
Pacific

**Roberto Flores (UTAH VALLEY UNIVERSITY)**

**TE14: Tuesday 5:00 PM - 6:30 PM**

*In-Person Panel*

**Group 9: Health & Population**

*10. Papers of Graduate Students*

Room: 3-710, Waseda University

**Chair** Nabarun Roy (South Asian University)

**Disc.** Philipp G. Khanin (Saint-Petersburg State University, associate professor)

Economic Nationalism and Regional Disintegration: Grassroots Nationalist Movements in Northeast Asia

**Hyejin Hwang (Seoul National University, University of Tokyo)**

Information avoidance and knowledge overconfidence in COVID-19 - the case of Japan

**Yuriko Hisada (Waseda University)**

Virus in waves as novel challenge to security and state responses: Approaches of India and Japan in a comparative perspective.

**Niranjan Barik (Ravenshaw University)**

**Nitish Nivedan Barik (Accenture )**

**Ananya Asmita (NSM City College,Cuttack, Odisha, India)**

**Josna Mishra (Miles College)**

**Kiranmayee Mohapatra (Bapuji Sikshya Niketan)**

Is Covid-19 about fragmentation or new opportunities for cooperation in the returning era of realism?

**Anna Kotova (St. Petersburg State University)**

## Wednesday

**WA02: Wednesday 9:00 AM - 10:30 AM**

*In-Person Panel*

**US military Engagements in Asia**

*4. Security, Geopolitics, and Energy Policy*

Room: 3-405, Waseda University

**Chair** Hiroshi Ohta (Waseda University, SILS)

**Disc.** Nukhet A. Sandal (Ohio University)

How Do Leaders Lie? Interstate Deception in Bilateral Diplomacy

**Ronald Yi Xiu Wu (Columbia University)**

Evolving Geopolitical Rivalry in the Indian Ocean: A Case Study of Maldives

**Nabarun Roy (South Asian University)**

Deterrence or Provocation? Effects of the US Military Engagement in Cross-Strait Conflict

**weifang xu (Florida State University)**

**WA03: Wednesday 9:00 AM - 10:30 AM**

*In-Person Panel*

**Panel 5: Special Cases on Anthropocene**

*1. Anthropocene in Asia Pacific and the World*

Room: 3-406, Waseda University

**Chair** Asami Miyazaki (Kumamoto Gakuen University)

**Disc.** Jelica Stefanovic-Stambuk (University of Belgrade Faculty of Political Sciences)

Maritime Security in the Era of Anthropocene: An Analytical Framework and Its Policy Applications

**Lingqun Li (Nanjing University)**

Dialogic pedagogy in internally displaced peoples' education: the case of Lumad Bakwit School in the Philippines

**Giselle Miele (Waseda University)**

Rereading Global IR as Cosmopolitics: Multinaturalism, Pluriverse, Relationality

**Hiroaki Ataka (Ritsumeikan University)**

Unwanted and Separated: Minamata Convention on Mercury and Issues around the Minamata

**Asami Miyazaki (Kumamoto Gakuen University)**

NIMBY Protests Against Renewable Energy Development in South Korea: A Systematic Analysis"

**Cesare M. Scartozzi (CGIAR, Alliance Bioversity and CIAT)**

Making peace with nature: A green hydrogen pathway in Asia-Indo Pacific

**Jelica Stefanovic-Stambuk (University of Belgrade Faculty of Political Sciences)**

**Jadranka Joksimovic (University)**

**WA06: Wednesday 9:00 AM - 10:30 AM**

*In-Person Panel*

**Asian Migration Highway: political stability, social integrity / plurality and life course of immigrants**

*3. Regional Integration and Collaboration in Asia-Indo Pacific, Europe and the World*

Room: 3-701, Waseda University

**Chair** Masaki Matsuo (Utsunomiya University - School of International Studies )

**Disc.** Fabio Lee Perez (Utsunomiya University)

Saudi Prime Minister's Power and People's Preferences for the National-Immigrant Plural Society

**Shingo Hamanaka (Ryukoku University)**

Return Migration and Intentions to Emigrate Again: A Study of Indian Nurses Returned from Gulf Cooperation Council Countries

**Yuko Tsujita (IDE-JETRO)**



Acceptance of Care-giving Foreign Workers in Japan: the new trend  
**An-chun Cheng (Utsunomiya University)**

Regional Integration and Collaboration in Indo-Pacific Region:- Role of SAARC and BIMSTEC

**Chetna Rana (Kurukshetra University)**

A Comparative Study of Regional Integration in Asia and Europe : A Pathway for Sustainable Development

**Pradeep Singh Chauhan (Kurukshetra University, Kurukshetra)**

---

**WA07: Wednesday 9:00 AM - 10:30 AM** *In-Person Panel*  
**Thinking about US-China relations and the international order from the US perspective**

*5. Democracy and Authoritarianism; The Russo-Ukrainian War & the Crisis in East Asia*

Room: 3-702, Waseda University

**Chair** Asima Sahu (Ravenshaw University)

**Disc.** Dat Tan Nguyen (East China Normal University)

Democracy vs. Security: The U.S. Foreign Policy Preference and its Effect on Democracy in Bangladesh

**MD SAHIDUL ISLAM (University of Memphis)**

Assuring Allies in Times of Crisis: Assessing the Effectiveness of Tools for Alliance Assurance in Crises

**Kyungwon Suh (UC Institute on Global Conflict and Cooperation)**

"Economic Sanctions From Hell: Implications for East Asia"

**Steven S. Rosefield (University of North Carolina, Chapel Hill)**

THE UKRAINE CRISIS AND THE APPARENT RESTRUCTURING OF THE GLOBAL ORDER

---

**WA08: Wednesday 9:00 AM - 10:30 AM** *In-Person Panel*  
**COVID**

*2. Covid-19 Pandemic and International Relations*

Room: 3-703, Waseda University

**Chair** Charles Chong-Han Wu (National Chengchi University)

**Disc.** Satoshi Mizobata (Kyoto University)

The Impact of Trade Liberalization in International Cooperation on Sovereign States' Performance of Epidemic Prevention

**Wayne Tan (National Chung Hsing University)**

Disease from Outland: Topic Analysis and Trend of Facebook Posts on the Early Stage COVID of Taiwan

**Shu-Wei Tsai (Institute of China and Asia-Pacific Studies, National Sun Yat-sen University)**

**Hsuan-lei Shao (National Taiwan Normal University, Dept. East Asian Studies)**

The Impact of the Covid-19 Pandemic on the Global Political Landscape

**You Xu (Waseda University)**

**Xiru Zhao (Waseda University, PhD student)**

Do Public Health Crises Dampen Public Support for Immigration? The case of Japan

**John Cheng (Tsuda University)**

**Michael Donnelly (University of Toronto)**

---

**WA09: Wednesday 9:00 AM - 10:30 AM** *In-Person Panel*  
**Asia Pacific Diplomacy**

*3. Regional Integration and Collaboration in Asia-Indo Pacific, Europe and the World*

Room: 3-704, Waseda University

**Chair** Jian Zhang (University of New South Wales, Canberra)

**Disc.** Sunil Kim (Kyung Hee University)

ASEAN Centrality in Comparative Perspectives

**Shintaro Hamanaka (Institute of Developing Economies)**

Forming International Order: Japan-U.S.-China Global Governance and Mutual Recognition

**Asuka Matsumoto (Tohoku University)**

**Xuebin ZHANG (Faculty of International Studies Osaka University of Economics and Law)**

The Para-diplomatic Activism of Guangdong-Hong Kong-Macao Greater Bay Area in East Asian Regional Arrangement under the Framework of RCEP

**Mengdie Zhou (University of Macau)**

Nation-state crises and small island developing states (SIDS).

**Philipp G. Khanin (Saint-Petersburg State University, associate professor)**

Founding Japan at the Rokumeikan: The Emotions of Challenging and Establishing Authority

**Felix Roesch (Coventry University)**

---

**WA10: Wednesday 9:00 AM - 10:30 AM** *In-Person Panel*  
**Group 3: Geopolitics and Foreign Policy**

*10. Papers of Graduate Students*

Room: 3-709, Waseda University

**Chair** Saira Khan (McGill University)

**Disc.** Inho Choi (Bilkent University)

The Strategic Impact of Japan's Security Policy Expansion under Shinzo Abe on Southeast Asian States: Case of Japan – Indonesia Security Cooperation

**Rafyoga Jehan Pratama Irsadanar (Kobe University)**

The impact of security threats on the characteristics of middle power : Applying middle power concept in institutional balancing theory to MIKTA

**Hyun Kim (Hankuk University of Foreign Studies)**

India's Foreign Policy in the US-China Competition: Will it be able to maintain its position as a great power in Asia?

Weaponization of interdependence: Korea's Economic and Security Strategy and IPEF

**JONGSEONG PARK (Hankuk University of Foreign Studies)**

---

**WA13: Wednesday 9:00 AM - 10:30 AM** *In-Person Panel*  
**War and Peace in China and Taiwan Question**

*8. History of War and Peace*

Room: 7-206, Waseda University

**Chair** Xiaojun Li (University of British Columbia)

**Disc.** Chien-wu Alex Hsueh (Graduate Institute of East Asian Studies, National Chengchi University)

The Continued Usage of Historical Memory Narrative by China against Japan: A Reminder of the Possession of a Weapon at Disposal?

**Kasina Sundhagul (Fudan University)**

Casualty Sensitivity and Attitudes towards the Use of Force: Experimental Evidence from Taiwan

**Enze Han (University of Hong Kong)**

**Ronan Tse-min Fu (Academia Sinica)**

**Weiwen Yin (University of Macau)**

Armament under the Shadow of the Dragon: Taiwan's Military Procurement

**Shang Su Wu (Rabdan Academy)**

---

**WA14: Wednesday 9:00 AM - 10:30 AM***In-Person Panel***Group 6: Thoritical Perspective in International Relations***10. Papers of Graduate Students*Room: 3-710, Waseda University**Chair** Hidekazu Sakai (Kansai Gaidai University)**Disc.** Chengxin Pan (University of Macau, China)

A Tale of 2 Visions: India, Japan and Women, Peace &amp; Security (WPS) in Indo-Pacific

**Astha Chadha (Ritsumeikan Asia Pacific University (Japan) | Pacific Forum (Hawaii))**

The English and Chinese Schools of International Relations: Comparisons of Histories and Logics

**Yue Li (Kobe University)**

Constructing Subservience: Theorizing Citizenship Under Conditions of State-Sponsored Violence.

**Abhimanyu Rajshekar-Falconer (The University of California, Irvine)**

---

**WB01: Wednesday 10:45 AM - 12:15 PM***In-Person Panel***Panel 7: Empire, Borders, Refugees***4. Security, Geopolitics, and Energy Policy*Room: 3-404, Waseda University**Chair** Dongshu Liu (City University of Hong Kong)**Disc.** Lidija Kos-Staniscic (University of Zagreb, Faculty of Political Science)

Tibet: The paradoxical pulse between Sino- India geopolitics

**Avantika Dureha (Jawaharlal Nehru University)**

Perspective Taking and Reception of Refugees in the Global South:

Evidence from Survey Experiment in Thailand

**Enze Han (University of Hong Kong)****Xiaojun Li (University of British Columbia)****Sirada Khemanitthathai (Chiang Mai University)**

Reform, Rails, and Rice: Political Railroads and Local Development in Thailand

**Christopher Paik (New York University Abu Dhabi)**

Impact of the Ukraine War on Asia and Peacebuilding from Japan

**Kumiko Haba (Aoyama Gakuin University, Harvard University)**

---

**WB02: Wednesday 10:45 AM - 12:15 PM***In-Person Panel***Panel 2: Alliance Dilemma and US-Japan alliance***4. Security, Geopolitics, and Energy Policy*Room: 3-405, Waseda University**Chair** Noriko Suzuki (Waseda University)**Disc.** Hao Li (Kobe University)

From Entrapment to Abandonment to Entrapment plus Abandonment: Understanding Japan's Fears in the U.S.-Japan Alliance

**Takafumi Ohtomo (University of Tsukuba)**

Transformation of U.S. Economic Sanctions: An Economic Interdependence Perspective

**EIKO MATSUMOTO (Graduate School of Takushoku University)**

The role of navies in statecraft and the East Asian security order: shared strategic imaginaries and realities in the collaboration between the Japanese Maritime Self-Defence Force (JMSDF) and the Royal Australian Navy (RAN)

**Paul Chamberlain (Australian National University)**

---

**WB03: Wednesday 10:45 AM - 12:15 PM***In-Person Panel***Indo-Pacific Region***4. Security, Geopolitics, and Energy Policy*Room: 3-406, Waseda University**Chair** Peter Marcus Kristensen (University of Copenhagen)**Disc.** Felix Kuhn (University of Tokyo)

Raising the Minimum Legal Age to Curb Child Marriage: The Role of Women Ulama Congress in Indonesia

**Hilda Kemala (Waseda University)**

Grand Strategy under Contestation: How the Rise of China Shaped the US Perceptions and Choices?

**Yeh-chung Lu (National Chengchi University)**

A Game-Theoretic Model of Superpowers Competing for a Sphere of Influence

**Tomoo Kikuchi (Waseda University)**

Theoretical Conditions to Reach Peaceful Denuclearization in Unequal Nuclear Rivalries

**Kiyohisa Shibai (ROIS-DS/Institute of Statistical Mathematics)**

---

**WB04: Wednesday 10:45 AM - 12:15 PM***In-Person Panel***Grassroots Activism, Human Rights and Democracy in the Global South and Beyond: Linking History , culture and Politics***9. Others: Japanology, Global South, Latin America*Room: 3-606, Waseda University**Chair** Pinar Temocin (Hiroshima University)**Disc.** Bann Seng Tan (Ashoka University)

Before the Milk Tea Alliance: the Study of Transnational Youth Activism in Asia through Socio-constructivist Approach and Social Network Theory

**Tuwanont Phattharathanasut (Waseda University )**

Institutional Challenges to Police Accountability in Japan: A Case Study of the Assassination of the Former Prime Minister Using the "Chain of Accountability" Framework

**Yoshiki Kobayashi (Meiji University)**

Self-censorship and Deliberative Democracy

**James Wong (Hong Kong University of Science and Technology )**

China's Soft Power Diplomacy with special reference to Japan

**Mabel Aind (Assam Royal Global University, India)**

---

**WB06: Wednesday 10:45 AM - 12:15 PM***In-Person Panel***Emerging Partnerships, Technologies, and Urgencies in the Indo-Pacific***3. Regional Integration and Collaboration in Asia-Indo Pacific, Europe and the World*Room: 3-701, Waseda University**Chair** Jiye Kim (Ritsumeikan Asia Pacific University; University of Sydney)**Disc.** Yoichiro Sato (Ritsumeikan Asia Pacific University)

The Shifted Paradigm in Technonationalism: The Case Study of the Japanese Semiconductor Industry

**Seohee Ashley Park (Tohoku University)****Yoichiro Sato (Ritsumeikan Asia Pacific University)**

The Impact of Space Commercialization on Governments and Businesses in the Asia-Pacific

**Jiye Kim (Ritsumeikan Asia Pacific University; University of Sydney)****Arpit Raswant (Deakin University)**

Addressing Gendered security through Indo-Pacific strategies:  
Constructivist analysis of foreign policies of India and Japan  
**Astha Chadha (Ritsumeikan Asia Pacific University (Japan) | Pacific Forum (Hawaii))**  
Middle Powers alignment and collaboration in the Indo-Pacific: A case study of Cyber Security cooperation  
**Thomas Murphy (International Christian University)**  
**Stephen R. Nagy (International Christian University)**  
Energy and National Security in the Indo-Pacific: A case study of Wind Turbines project between EU and Japan  
**Anke Kennis (Waseda University)**

---

**WB07: Wednesday 10:45 AM - 12:15 PM** *In-Person Panel*  
**China Studies**

*5. Democracy and Authoritarianism; The Russo-Ukrainian War & the Crisis in East Asia*

Room: 3-702, Waseda University

**Chair** ABE YUKI (Aoyamagakuin University)  
**Disc.** Sunghee Cho (Temple University Japan Campus)  
A Critical Assessment of 'Like-mindedness' in International Relations  
**Sebastian Biba (Goethe University Frankfurt)**  
**Bertram Lang (Goethe University Frankfurt)**  
Reconsidering China's Rise under the Liberal International Order  
**Min Shu (Waseda University)**

---

**WB08: Wednesday 10:45 AM - 12:15 PM** *In-Person Panel*  
**Covid-19 Crisis and its impact in Area Studies**

*2. Covid-19 Pandemic and International Relations*

Room: 3-703, Waseda University

**Chair** Felix Roesch (Coventry University)  
**Disc.** Robert Maxwell (University of Washington)  
The last attempt at immunizing International Relations: The COVID-19 lessons for transcending the final frontier of diplomacy  
**Jelica Stefanovic-Stambuk (University of Belgrade Faculty of Political Sciences)**  
**Jadranka Joksimovic (University)**  
Rethinking Human Security in a Post-COVID 19 World: Towards a Post-Anthropocentric Approach?  
**Giorgio Shani (London School of Economics/ International Christian University)**  
"Under-securitization of COVID-19 in Japan: Voluntary Behavioral Change as Self-defense?"  
**Kenki Adachi (Ritsumeikan University)**

---

**WB10: Wednesday 10:45 AM - 12:15 PM** *In-Person Panel*  
**Group 4: Asia-Pacific**

*10. Papers of Graduate Students*

Room: 3-709, Waseda University

**Chair** Thomas S. Wilkins (University of Sydney)  
**Disc.** Matteo Dian (University of Bologna)  
Complementary Pathways' Admission Through Private sponsorship programs: A case study of Language schools for Syrian in Japan  
**Souzan Hussein (Waseda University)**  
US Withdrawal from JCPOA and Its Effect on China's Energy Needs  
**Jerry Concha (Claremont Graduate University)**  
Women's Descriptive and Substantive Representation in South Korea  
**Hyunjin An (Hankuk University of Foreign Studies)**

---

**WB13: Wednesday 10:45 AM - 12:15 PM** *In-Person Panel*  
**War in South East Asia**

*8. History of War and Peace*

Room: 7-206, Waseda University

**Chair** Miyoko Taniguchi (Miyazaki University)  
**Disc.** Phanuphat Chattragul (Chiang Mai University)  
Treasure-hunting, Popular Memory, and the Philippines:  
Historicizing Yamashita's Gold 75 years after the Second World War  
**Jose Mathew Luga (University of the Philippines Baguio/ International Christian University)**  
In Security Dilemma: Is Asia's Future in Europe's Past?  
  
Armenian refugees in Japan during WW1  
**Meline Mesropyan (Fellow researcher (Tohoku University))**

---

**WC01: Wednesday 1:30 PM - 3:00 PM** *In-Person Roundtable*  
**Hedging against Goliaths?: Small States and Strategic Uncertainties of the Asia-Indo-Pacific Countries in the Post Covid-19 Era**

*4. Security, Geopolitics, and Energy Policy*

Room: 3-404, Waseda University

**Chair** Chanintira na Thalang (Thammasat University)  
**Part.** Takashi Tsukamoto (Ritsumeikan Asia Pacific University)  
**Part.** Pinitbhand Paribatra (Thammasat University)  
**Part.** Kasina Sundhagul (Fudan University)  
**Part.** Phanuphat Chattragul (Chiang Mai University)

---

**WC03: Wednesday 1:30 PM - 3:00 PM** *In-Person Panel*  
**The Nexus between Norms and Practices in ASEAN-centric Multilateralism**

*1. Anthropocene in Asia Pacific and the World*

Room: 3-406, Waseda University

**Chair** Takeshi Yuzawa (Hosei University)  
**Disc.** Kei Koga (Nanyang Technological University)  
Practice Makes Perfect? Understanding ASEAN's Institutionalization of Human Rights Norms  
**Kimikazu Shigemasa (Kwansei Gakuin University)**  
Practicing Norm 'Anti-Preneurship' : Maintaining 'ASEAN's Centrality' in the Contested Regionalism in the Asia/Indo-Pacific  
**Kalvin Fung (Waseda University)**  
ASEAN's "Quest for Autonomy" in Practice: The Adoption and Implementation of the ASEAN Charter  
**Riko WATANABE (Waseda University)**  
Practice Does Matter: The Evolution of the ASEAN's People Forum and a Growing Narrative of a 'People-Oriented and People-Centered' Community  
**Dwi Ardhanariswari Sundrijo (Universitas Indonesia)**  
Why Dialogue, Not Practical Cooperation? : Policy Dynamics, Norm Change, and Practice Reproduction in the ASEAN Regional Forum  
**Takeshi Yuzawa (Hosei University)**

---

**WC04: Wednesday 1:30 PM - 3:00 PM** *In-Person Panel*  
**China-US Rivalry: heading towards new Cold War?**

*4. Security, Geopolitics, and Energy Policy*

Room: 3-606, Waseda University

**Chair** Jian Zhang (University of New South Wales, Canberra)  
**Disc.** Rafal Ulatowski (University of Warsaw)

Symbolism in European Military Engagement in the Indo-Pacific:  
Does It Stack Up?

**Sebastian Biba** (Goethe University Frankfurt)

**Bec Strating** (La Trobe University)

New Turing Point? Taiwan's 2024 Presidential Election and Its  
Strategic Implications

**MIKE CHIA-YU HUANG** (Nanfang College Guangzhou)

SOF's pivot to great power competition and its implications to China  
**Kai Liao** (Hainan Normal University)

China's Response to the Russo-Ukrainian War amid the Major  
Power Rivalry

**Ji You** (Xian Jiaotong Liverpool University)

Australia-China Relations in the Era of New Cold War

**Jian Zhang** (University of New South Wales, Canberra)

Strategising Migration against Pandemic Insecurities: Asian  
Practices

**Syeda Rozana Rashid** (University of Dhaka)

Changing Dynamics of Global Energy Security and Renewable  
Energy: A Geopolitical Perspective

**Dr. Geetanjali Singh** (ICSSR, New Delhi)

---

**WC10: Wednesday 1:30 PM - 3:00 PM**

*In-Person Panel*

**Graduate Student Papers Group 1: Diplomacy**

*10. Papers of Graduate Students*

Room: 3-709, Waseda University

**Chair** Soojin Park (Ewha Womans University)

**Disc.** Chino Yabunaga (Toyo University)

Security or Supremacy? The Logic Behind the US-China Technology  
War

**Xian Bing Kelvin Hah** (Tamkang University)

The Plurality and Specificity of Pacific Regionalism in the Changing  
World Order

**Solstice Middleby** (University of Adelaide)

The Contemporary Populist Feedback Loop: Polarised societies,  
divisive politics and the 'algorithmisation' of social media

**Akash Bhagat** (Jawaharlal Nehru University)

---

**WC11: Wednesday 1:30 PM - 3:00 PM**

*In-Person Panel*

**2):- Engineering Global Resilience: Adaption, Renewal, and Self-  
transformation**

*6. Religion and Philosophy*

Room: 7-212, Waseda University

**Chair** Ryoko Nakano (Kanazawa University)

**Disc.** Sebastian Maslow (Sendai Shirayuri Women's College)

Does Escalating Great Power Competition Reduce Secondary  
Powers' Hedging Behaviors? The Practice of the Asia-Pacific States  
amid the Sino-US Competition

**Chien-wu Alex Hsueh** (Graduate Institute of East Asian Studies,  
National Chengchi University)

Free and Open Indo-Pacific as Japan's Conservative Resilience  
Strategy

**Ryoko Nakano** (Kanazawa University)

How to construct more resilient political communities? An East  
Asian medical approach to rethinking the state body

**Ching-Chang Chen** (Ryukoku University)

How can we restore our focus in the Japan-South Korea "comfort  
women issue"? An attempt by using the idea of engi in Mahāyāna  
Buddhism

**Naofumi Yamada** (Ritsumeikan University)

Spatial resilience in IR: fractality of the social as a space of analysis

**Atsuko Watanabe** (Kanazawa University)

---

**WC12: Wednesday 1:30 PM - 3:00 PM**

*In-Person Panel*

**Panel 1: Global Economy, Patriarch and Gender in South Asia**

**Chair: Parveen Kumar Nimbrayan, Discussant: Khushi Singh  
Rathore**

*7. Gender Studies*

Room: 7-205, Waseda University

**Chair** Robert Hanlon (Thompson Rivers University)

**Disc.** Emilian Kavalski (Jagiellonian University in Krakow (Poland))

Sri Lankan Garment Industry and limitations of Women's Economic  
Development: A Feminist Analysis

**Saima Azim** (Jamia Millia Islamia University)

---

**WC06: Wednesday 1:30 PM - 3:00 PM**

*In-Person Roundtable*

**Is functional cooperation (still) possible in the Asia Pacific in areas  
of disaster relief and humanitarian response?**

*3. Regional Integration and Collaboration in Asia-Indo Pacific, Europe and the  
World*

Room: 3-701, Waseda University

**Chair** Catherine Jones (University of St Andrews)

**Part.** Garren Mulloy (Daito Bunka University)

**Part.** Rikard Jalkebro (Anwar Gargash Diplomatic Academy)

**Part.** Matteo Dian (University of Bologna)

**Part.** Miwa Hirono (Ritsumeikan University)

**Part.** Catherine Jones (University of St Andrews)

---

**WC07: Wednesday 1:30 PM - 3:00 PM**

*In-Person Panel*

**The impact of economic sanctions on EU, Japan, and China**

*5. Democracy and Authoritarianism; The Russo-Ukrainian War & the Crisis in East  
Asia*

Room: 3-702, Waseda University

**Chair** Sunghee Cho (Temple University Japan Campus)

**Disc.** Lina Gong (Nanyang Technological University)

The economic effects of the war in Ukraine: a comparison between  
the EU and Japan

**Bruno Dallago** (University of Trento)

The economic effects of the war in Ukraine: a comparison between  
the EU and Japan

**Sara Casagrande** (University of Trento)

**Bruno Dallago** (University of Trento)

The EU and the war in Ukraine: From reforms to derailing  
integration?

**Sara Casagrande** (University of Trento)

**Bruno Dallago** (University of Trento)

---

**WC08: Wednesday 1:30 PM - 3:00 PM**

*In-Person Panel*

**How to end or change public policies on COVID-19: The impact on  
society and international relations**

*2. Covid-19 Pandemic and International Relations*

Room: 3-703, Waseda University

**Chair** Susan N. Engel (University of Wollongong)

**Disc.** Sunil Kim (Kyung Hee University)

State Repression with Chinese Characteristics during the COVID-19  
Pandemic

**Lin (Kirin) PU** (Tulane University)

**Thung-hong Lin** (Academia Sinica)

Creating a home by the Female migrant of Northeastern states in Hyderabad city , India

**Reona Shinam (University of Hyderabad)**

South Asian Women Migrants to the Gulf: Implications of Covid 19 and Way Forward

**Anisur Rahman (Jamia Millia Islamia, New Delhi )**

---

**WC13: Wednesday 1:30 PM - 3:00 PM**

*In-Person Panel*

**US and War in Southeast Asia**

*8. History of War and Peace*

Room: 7-206, Waseda University

**Chair** Wayne Tan (National Chung Hsing University)

**Disc.** Nimid Ang (Ramkhamhaeng University)

Military Aid and Extractive Capacity: Evidence from U.S. Arms Sales to Taiwan

**XIAOYUAN LI (Tongji University)**

The Legacy of US Bombing on Cambodia

**Chungeun Yoon (KDI School of Public Policy and Management)**

**Jiheon Hong (KDI School of public policy and management)**

A Cold War Perspective on Contemporary Geopolitics: The Realist Thought of Kōsaka Masataka and the Asia-Indo Pacific Region Today  
**Felix Kuhn (University of Tokyo)**

Beyond the Economic Rationale: Examining the Political and Security Dimensions of the Thai Canal Project

**Phakkanan Leongpanyawong (Ramkhamhaeng University)**

**Natthanan Kunnamas (Chulalongkorn University)**

A New Geopolitical Pivot: South China Sea and Energy Trade

**Dongkeun Lee (The Australian National University)**

---

**WD01: Wednesday 3:15 PM - 4:45 PM**

*In-Person Panel*

**Panel 6: China, peacekeeping, international cooperation**

*4. Security, Geopolitics, and Energy Policy*

Room: 3-404, Waseda University

**Chair** Lina Gong (Nanyang Technological University)

**Disc.** Catherine Jones (University of St Andrews)

Unravelling Pyongyang's Nuclear Risk-Taking under Kim Jong-un

**Jihwan Hwang (University of Seoul)**

Go Big or Go Home: Explaining China's Upsizing in UN Peacekeeping Missions Amidst the Rise of Token Forces

**Xiaojun Li (University of British Columbia)**

Japan's nuclear puzzle: balancing between deterrence and disarmament

**Rita Durão (NOVA University of Lisbon, Portuguese Institute of International Relations (IPRI/NOVA))**

The Variety of State-Intervention: A Comparison of Industrial Policies in the Electrical Vehicle (EV) Industry of China, Japan and India

**Zeying Wu (Lingnan University)**

**Min Ye (Boston University)**

---

**WD03: Wednesday 3:15 PM - 4:45 PM**

*In-Person Panel*

**Panel 3 : Climate Crisis: Energy Transition for Peace**

*1. Anthropocene in Asia Pacific and the World*

Room: 3-406, Waseda University

**Chair** Kazuo Matsushita (Kyoto University)

**Disc.** Kazuo Matsushita (Kyoto University)

Climate Crisis: Energy Transition for Peace

**Kazuo Matsushita (Kyoto University)**

"Integration of Sustainable Development Goals into Climate Change Policymaking to strengthen the synergies and manage trade-offs"

**Xin Zhou (Integrated Sustainability Centre, IGES)**

Critical Minerals for Net-zero Transition: why we need to address supply chain challenges and environmental and social spillovers?

**Mustafa MOINUDDIN (Integrated Sustainability Centre, IGES)**

Development of long-term sustainable transition pathways on a city scale

**Miho Kamei (Integrated Sustainability Centre, IGES)**

---

**WD06: Wednesday 3:15 PM - 4:45 PM**

*In-Person Panel*

**EU and Asia Pacific**

*3. Regional Integration and Collaboration in Asia-Indo Pacific, Europe and the World*

Room: 3-701, Waseda University

**Chair** Anuradha Oinam (Jawaharlal Nehru University, New Delhi)

**Disc.** Shingo Hamanaka (Ryukoku University)

"If It Hadn't Been For Love" – Classical Realism, Emotions, Practice Theory, and the International Activities of Canadian Provinces'

**Grant Dawson (University of Nottingham, Ningbo)**

The politics of Development Programming – the disconnection between theory and practice, is it time we take a step back?

**Lisa Thorley (University of Leeds)**

The 'center of gravity' moves eastward in Europe: reality or illusion?

And what does this mean for the West's position in the world?

**Maciej Ras (University of Warsaw)**

Green Regionalism and Eco-state from EU to Taiwan—An Analysis on the Development of Wind Power Industry

**Scott Y. Lin (National Chengchi University)**

**Hsiaocong Liu (National Chengchi University)**

---

**WD07: Wednesday 3:15 PM - 4:45 PM**

*In-Person Panel*

**China and Human Rights**

*5. Democracy and Authoritarianism; The Russo-Ukrainian War & the Crisis in East Asia*

Room: 3-702, Waseda University

**Chair** Karla Estephany Alvarado Romero (Heidelberg University)

**Disc.** Khushi Singh Rathore (Jawaharlal Nehru University)

China's Foreign Policy after the 1989 Tiananmen Square Crackdown and during Its Recent Oppression in Xinjiang

**Sunghee Cho (Temple University Japan Campus)**

Crafting Public Opinion: The efficiency of the China's media control policies.

**Joshua Lin (National Taiwan University)**

Factional Politics and Authoritarian Resilience in China

**Hao Li (Kobe University)**

Psychological Roots of Support for Autocracy in Hong Kong

**Samuel Liu (Cornell University)**

**Tetsuro Kobayashi (City University of Hong Kong)**

---

**WD09: Wednesday 3:15 PM - 4:45 PM**

*In-Person Panel*

**Indo-Pacific Diplomacy: India, Japan, ASEAN and the UK**

*3. Regional Integration and Collaboration in Asia-Indo Pacific, Europe and the World*

Room: 3-704, Waseda University

**Chair** Stanzin Lhaskyabs (Jawaharlal Nehru University)

**Disc.** Rafyoga Jehan Pratama Irsadanar (Kobe University)

India-Japan Relations@70: From Civilisational to Strategic Partnership

**Asima Sahu (Ravenshaw University)**

**Niranjana Barik (Ravenshaw University)**

ASEAN's Equidistant Diplomacy with China and the US

**Hiro Katsumata (Tohoku University, Japan)**

Re-envisioning the "Fundamental Values" of a "Free and Open"

Indo-Pacific: A Post-Western Approach

**Giorgio Shani (London School of Economics/ International Christian University)**

---

**WD11: Wednesday 3:15 PM - 4:45 PM** *In-Person Panel*

**1): - Engineering Global Resilience: Adaption, Renewal, and Self-transformation**

*6. Religion and Philosophy*

Room: 7-212, Waseda University

**Chair** Ryoko Nakano (Kanazawa University)

**Disc.** Kenki Adachi (Ritsumeikan University)

Collective Memory as Resilience: The Politics of Trauma and Remembrance in Post-3.11 Tohoku

**Sebastian Maslow (Sendai Shirayuri Women's College)**

Forgiveness in international politics

**Karl Gustafsson (Stockholm University)**

Resilience and Vulnerabilities: A Critical Examination of Japan's Resilience Governance

**Misato Matsuoka (Teikyo University)**

Does Making Global Solidarity Improve Local Human Security

Conditions? A Case of Minamata Convention

**Hazuki Sasaki (Kanazawa University)**

---

**WD12: Wednesday 3:15 PM - 4:45 PM** *In-Person Panel*

**Panel 3: Global Governance and Global issues and Gender**

*7. Gender Studies*

Room: 7-205, Waseda University

**Chair** Yeonju Jung (Stockholm University)

**Disc.** Nina Oiki (Waseda University)

Explaining gender-sensitive measures for COVID-19: a cross-national analysis

**Fang-Yi Huang (Soochow University, Taiwan)**

**Jun-Da Lin (National Taiwan University)**

Gender Mainstreaming in Global Governance: An Analysis of Public-Private Partnerships in Foreign Aid Programs

**Yukiko Kuramoto (Rikkyo University)**

Strategic and Domestic Considerations Make China's War on Taiwan Unlikely

**Saira Khan (McGill University)**

---

**WE01: Wednesday 5:00 PM - 6:30 PM** *In-Person Panel*

**Panel 2: Alliance Dilemma and US-Japan alliance**

*4. Security, Geopolitics, and Energy Policy*

Room: 3-404, Waseda University

**Chair** Lestari Nurhajati (LSPR Communication and Business Institute)

**Disc.** Hao Li (Kobe University)

The Construction of the Indo-Pacific in German and Japanese Foreign Policy Discourses

**Sebastian Maslow (Sendai Shirayuri Women's College)**

The East Asian diplomatic repertoire and the future of the institution of diplomacy

**Antoine Roth (Tohoku University)**

Confronting the Asymmetry: Impediments to US-Japan-ROK

Trilateral Cybersecurity Cooperation and Effects on Resolve and

Accommodative Signaling across Domains

**Kangkyu Lee (Georgia Institute of Technology)**

---

**WE02: Wednesday 5:00 PM - 6:30 PM** *In-Person Panel*

**Governance and geopolitics of energy transition in Asia and beyond**

*4. Security, Geopolitics, and Energy Policy*

Room: 3-405, Waseda University

**Chair** Hiroshi Ohta (Waseda University, SILS)

**Disc.** Yasuko Kameyama (University of Tokyo)

**Disc.** Pinar Temocin (Hiroshima University)

The Politics of energy transition in Japan

**Yves E. Tiberghien (University of British Columbia)**

**Miranda Schreurs (Technical University of Munich, Bavarian School of Public Policy)**

**Michiyo Ohi (Nanzan University)**

**Hiroshi Ohta (Waseda University, SILS)**

The EU as a rule setter in climate and energy policy

**Yves E. Tiberghien (University of British Columbia)**

**Tsutomu Sato (Tohoku University)**

China and the geopolitics of energy transition

**Min Shu (Waseda University)**

The politics of U.S. climate and energy policy

**Michiyo Ohi (Nanzan University)**

---

**WE04: Wednesday 5:00 PM - 6:30 PM** *In-Person Panel*

**Theory and practice of humanitarianism towards displaced people under humanitarian crises from the perspectives of Asia and Pacific**

*9. Others: Japanology, Global South, Latin America*

Room: 3-606, Waseda University

**Chair** Josuke Ikeda (University of Toyama)

**Disc.** Nimid Ang (Ramkhamhaeng University)

Why Japanese government and society did accept the Ukrainian displaced people into Japan?

**Chigumi Kawaguchi (Toyogakuen University)**

The Human Movement Pendulum: Two Directions, Two Politics, Two Ethics

**Josuke Ikeda (University of Toyama)**

Examining the (in)visibility of older persons in humanitarian response: Insights from the Philippines

**Lisette Robles (JICA Ogata Sadako Research Institute for Peace and Development)**

Education for the Displaced Rohingya Children in Malaysia – government policies and relations to non-formal education centers.

**Mogana Sunthari Subramaniam (Taylor's Law School, Taylor's University. )**

---

**WE06: Wednesday 5:00 PM - 6:30 PM** *In-Person Panel*

**Green Regionalism and Sustainable Development in/for the Asia-Indo-Pacific**

*3. Regional Integration and Collaboration in Asia-Indo Pacific, Europe and the World*

Room: 3-701, Waseda University

**Chair** Pooja Sehbag (Jawaharlal Nehru University, New Delhi)

**Disc.** Yuka Fukunaga (Waseda University)

Gender Equality and Climate Adaptation Aid in Small Island Developing States of the Asia-Pacific Region

**Wen-yang Chang (National Chengchi University)**



China's Search for Security in "Green"? Exploring China's Strategy on green FDI and partnerships networks

**Wei-hao Huang** (national sun-yat sen university)

**Nien-chung Chang-Liao** (Institute of Political Science, Academia Sinica)

**Ronan Tse-min Fu** (Academia Sinica)

Potential to co-operate and co-lead? Testing perception gaps in the EU-Asia mutual perceptions

**Natalia Chaban** (University of Canterbury)

**Thomas Christiansen** (Luiss University)

**Alexander Tan** (University of Canterbury)

How to end or change public policies on COVID-19: a comparative analysis on France and Poland

**Lukasz Czarnecki** (Pedagogical University of Krakow)

**Xavier Mellet** (Rikkyo University)

---

**WE09: Wednesday 5:00 PM - 6:30 PM**

*In-Person Panel*

**Power Struggle over Geo-economics in the Indo-Pacific**

*3. Regional Integration and Collaboration in Asia-Indo Pacific, Europe and the World*

Room: 3-704, Waseda University

**Chair** Takashi Terada (Doshisha University)

**Disc.** Yuma Osaki (Doshisha University)

**Disc.** Hideyuki Miura (Kyorin University)

"Fragmented Power": Examining Chinese experimental policy implementation through the lens of the Belt and Road Initiative

**Tabita Rosendal Ebbesen** (Lund University)

Strategic Competition between the US and China in the Semiconductor Industry

**Wonho Yeon** (Korea Institute for International Economic Policy)

Economic Interdependence Revisited: Japan, Australia and China

**Yuma Osaki** (Doshisha University)

The power struggle in rule formation on digital trade

**Hideyuki Miura** (Kyorin University)

---

**WE12: Wednesday 5:00 PM - 6:30 PM**

*Poster Session*

**poster**

*7. Gender Studies*

Room: 7-205, Waseda University

**Chair** Peter J Hudson (University of Delhi)

**Disc.** Chetna Rana (Kurukshetra University)

Reconceptualize Security Beyond the Borders: Praxes of Transnational Feminist Movement to Create a System of Genuine Security

**Yuuka Kageyama** (Doshisha University)

Women and Local Election Voting Rights

**Nina Oiki** (Waseda University)

The impact of gender in peace-building: A better approach to long-lasting peace

**Marcela Erosa** (Waseda University)

---

**WE13: Wednesday 5:00 PM - 6:30 PM**

*In-Person Panel*

**War and Conflict in East Asia and Japan**

*8. History of War and Peace*

Room: 7-206, Waseda University

**Chair** Akanksha Singh (Temple University, Tokyo, Japan)

**Disc.** MIKE CHIA-YU HUANG (Nanfang College Guangzhou)

The emergence and development of the fierce criticism of the Japanese Rising Sun flag as a "war-crime flag" in South Korea: A quantitative text analysis

**Hyoun-kyu Chey** (National Graduate Institute for Policy Studies (GRIPS))

State Formation in Early East Asia: A Quantitative and Qualitative Exploration

**Weiwen Yin** (University of Macau)

Global Shaming and the Politics of Backlash: Evidence from Japan and the United States

**Claudia Junghyun Kim** (City University of Hong Kong)

**Dongshu Liu** (City University of Hong Kong)

---

**WE07: Wednesday 5:00 PM - 6:30 PM**

*In-Person Panel*

**Small and Medium-sized Countries in the Ukraine Crisis**

*5. Democracy and Authoritarianism; The Russo-Ukrainian War & the Crisis in East Asia*

Room: 3-702, Waseda University

**Chair** Robert Maxwell (University of Washington)

**Disc.** Bruno Dallago (University of Trento)

The debate on 'lessons' for Taiwan in the wake of the war in Ukraine and in light of small state theories on asymmetric warfare

**Marcel Mangold** (Swedish Defence University)

Political Survival, Strategic Triangle and Alliance Politics: Japan's Foreign Policy on Taiwan in the post-Cold War era

**Mong CHEUNG** (Associate Professor, School of International Liberal Studies, Waseda University)

Small Powers' Security Strategies in the post-Cold War Period:

Comparative Study of Poland and Taiwan

**Rafal Wisniewski** (Adam Mickiewicz University, Poznan)

**Yu-Hua Chen** (Akita International University)

Cultivating the Rice of Industry: Semiconductors and Japan's

Evolving Approach to Economic Security

**David Parker** (GRIPS)

---

**WE08: Wednesday 5:00 PM - 6:30 PM**

*In-Person Panel*

**How to end or change public policies on COVID-19: The impact on society and international relations**

*2. Covid-19 Pandemic and International Relations*

Room: 3-703, Waseda University

**Chair** Upalat Korwatanasakul (School of Social Sciences, Waseda University)

**Disc.** Yasushi Katsuma (Waseda University)

Lessons learned from "zero-COVID-19" policy in China: Crisis management system at a grassroots level

**Hongyi LIU** (Waseda University)

Why do people keep wearing masks in Japan?: Examining the role of information about the behaviour of others

**Masahisa Endo** (Waseda University)

**Gento Kato** (Waseda University)

**Susumu Annaka** (Hirosaki University)

The European response to Beijing's zero COVID-19 policy: Public health and EU-China relations

**Enrico D'Ambrogio** (European Parliament)

ASEAN's policy responses towards China's zero-COVID regime: Case studies of Cambodia and Thailand

**Yuko Shimazaki** (Waseda University)

**sivarin Iertpusit** (Thammasat University)

**Upalat Korwatanasakul** (School of Social Sciences, Waseda University)

---

**WE14: Wednesday 5:00 PM - 6:30 PM**

*In-Person Panel*

**Group 8: Conflicts & Ethnicity**

*10. Papers of Graduate Students*

Room: 3-710, Waseda University

**Chair** Tomoo Kikuchi (Waseda University)

**Disc.** Cesare M. Scartozzi (CGIAR, Alliance Bioversity and CIAT)

UNCLOS and International Maritime Dispossession

**Mai Frndjibachian (University of Florida)**

Intra-state or Cross-border ethnic conflicts: Deconstruction of Russian security binding in Central Asia

**Xue Ruikai (Jilin University and Hokkaido University)**

The Five Eyes allies and the notion of China as a threat: Norms, interests and relative capabilities

**Maria Papageorgiou (UCL)**

**Zeno Leoni (King's College London)**

The Re-Emergence of the Indo-Pacific: A Systematic Review

**Peter Marcus Kristensen (University of Copenhagen)**

---

**Thursday**

---

**ThA01: Thursday 9:00 AM - 10:30 AM**

*In-Person Panel*

**Panel 11: Nuclear weapons, space, cyber and deterrence**

*4. Security, Geopolitics, and Energy Policy*

Room: 3-404, Waseda University

**Disc.** Yeh-chung Lu (National Chengchi University)

Low Yield Non-Strategic Nuclear Weapon for the Limited Nuclear War and Its Effects

**MD ARIFUR RAHMAN (EAST CHINA NORMAL UNIVERSITY)**

Arms Races between Great Powers – Experimental Evidence from the US and China

**weifang xu (Florida State University)**

Challenges to Deterrence Theory in the Nuclear-Cyber Nexus

**Ejr Cho (Institute for National Security Strategy (INSS))**

The Establishment of the AUKUS: Security Cooperation and Geopolitical Impact

**Wei-shan Kuo (National Chung Hsing University, Graduate Institute of International Politics)**

Pakistan's Role in the Indo-Pacific Region: Geopolitics and Domestic Issues

**Ren-shan JIA (National Chung Hsing University, Graduate Institute of International Politics)**

---

**ThA03: Thursday 9:00 AM - 10:30 AM**

*Poster Session*

**poster**

*1. Anthropocene in Asia Pacific and the World*

Room: 3-406, Waseda University

**Chair** Chris Pope (Fukuoka University)

**Disc.** Nabarun Roy (South Asian University)

On the Contradictions in the Relations between Poland and the European Union: An Analysis of the Factors behind the Prevalence of Anti-EU Politics in EU Approving Poland

**Michał Skubisz (Hitotsubashi University (Graduate School of International and Public Policy))**

Transformation of Contemporary Chinese National Identity: the Constructed Self Based on Social Identity Theory

**Manxi Cheng (University of St. Andrews)**

A Study on the Spread of "Mun-Wha-Eo(North Korea's normative language)" and Ethnic Nationalism in North Korea

**Soojin Park (Ewha Womans University)**

Beyond Charismatic Power Succession: A Comparative analysis of Power Succession between North Korea and Turkmenistan

**Soojin Park (Ewha Womans University)**

**Dowon Yun (Yonsei University)**

---

**ThA04: Thursday 9:00 AM - 10:30 AM**

*Poster Session*

**poster sessions**

*9. Others: Japanology, Global South, Latin America*

Room: 3-606, Waseda University

**Chair** Juan Luis Lopez Aranguren (University of Zaragoza (Spain))

**Disc.** Attawat Assavanadda (University of Hong Kong)

Explaining Japan's Grand Strategic Adjustment Under Abe: Towards (Neo)classical Realism

**Daichi Morishige (Ritsumeikan University)**

Europe's Cold War and China: Focusing on P.R.China's establishing Involvement in the "German problem" and Supporting East Germany 1949-1955.

**Tianze SHAO (Kyoto University)**

---

**ThA05: Thursday 9:00 AM - 10:30 AM**  
**Regional Integration Organizations in ASIA**

*In-Person Panel*

*8. History of War and Peace*

Room: 7-207, Waseda University

**Chair** Lisa Thorley (University of Leeds )

**Disc.** Maciej Ras (University of Warsaw)

Foreign Policy as a Recognition of Victims within Domestic Politics:  
The Case of Minamata Convention on Mercury in Japan

**Jaeun Yun (Rikkyo University)**

Afghanistan as a Gateway to Central Asia and its Current Scenario:  
An Assessment of Economic Cooperation between SAARC and CARs

**Rahimullah Safi (Kurukshetra University)**

Role and Challenges of ASEAN for Peaceful Solution of Regional  
Conflict

**Motoko Shuto (University of Tsukuba )**

---

**ThA07: Thursday 9:00 AM - 10:30 AM**  
**2) International Relation in northeast Asia**

*In-Person Panel*

*5. Democracy and Authoritarianism; The Russo-Ukrainian War & the Crisis in East Asia*

Room: 3-702, Waseda University

**Chair** Bann Seng Tan (Ashoka University)

**Disc.** IL SEOK OH (INSS)

The Revenge of the Democratic Peace

**Bann Seng Tan (Ashoka University)**

Long-term ontological insecurity after state succession: Narrative  
parallels between Russian and Chinese militarism

**Sibei Sun (University of Macau)**

US Migration and Refugee Policy in Comparative Perspective

**Henry (Chip) Carey (Georgia State University)**

---

**ThA09: Thursday 9:00 AM - 10:30 AM**  
**Refugee and Governance**

*In-Person Panel*

*3. Regional Integration and Collaboration in Asia-Indo Pacific, Europe and the World*

Room: 3-704, Waseda University

**Chair** Souzan Hussein (Waseda University)

**Disc.** Xenia Angelica Wijayanto (Institut Komunikasi dan Bisnis  
LSPR)

Australia's Proposal for a new Development Finance Institute: a  
North-South analysis

**Susan N. Engel (University of Wollongong)**

The Use of Soft Power in Digital Public Diplomacy: The Cases of  
Germany, Spain and Italy in the countries of Central Asia

**Lidija Kos-Stanisic (University of Zagreb, Faculty of Political  
Science)**

India's Engagement in International Climate Politics: Continuity and  
Change.

**Robert Mizo (University of Delhi)**

Can FOIP and ASEAN centrality coexist? Multilateralism and great  
power management in the Indo Pacific

**Matteo Dian (University of Bologna)**

India and Regionalism in South Asia

**Tara Devi Rai (Freie University)**

---

**ThA10: Thursday 9:00 AM - 10:30 AM**  
**international transition**

*In-Person Panel*

*3. Regional Integration and Collaboration in Asia-Indo Pacific, Europe and the World*

Room: 3-709, Waseda University

**Chair** Jani Ranasinghe (University of Colombo, California State  
University, Fullerton & Paris-10 Nanterre University )

**Disc.** Jiheon Hong (KDI School of public policy and management)  
Modern Russia's Foreign Policy: How Successful is the Turn to the  
East?

**Konstantin Khudoley (St. Petersburg State University)**

The Trump administration, the Belt & Road Initiative, and East Asia  
**Edward Ashbee (Copenhagen Business School)**

International Order Transition, Indo-Pacific and Middle Power (Re)  
Alignment: A Case of India-South Korea Relations

**Jojin John (Mahatma Gandhi University, India)**

---

**ThB01: Thursday 10:45 AM - 12:15 PM**  
**Panel 10: Terrorism, Cyber security failed states**

*In-Person Panel*

*4. Security, Geopolitics, and Energy Policy*

Room: 3-404, Waseda University

**Chair** Rikard Jalkebro (Anwar Gargash Diplomatic Academy)

**Disc.** Yoshiki Kobayashi (Meiji University)

When the Hard Target is the Right Target: The Connection between  
the Reputational Building and Target Selection of Terror Groups

**Burcu Pinar Alakoc (University of Chicago)**

**Alanna Johnson (University of Chicago)**

Underrepresented Japan: An Analysis of Limitations in Security  
Studies

**Vuslat Nur Sahin (Waseda University)**

Hedging Upon Availability: Post-Coup Myanmar's Strategic Limits  
and Choices

**Pinitbhand Paribatra (Thammasat University)**

---

**ThB02: Thursday 10:45 AM - 12:15 PM**  
**Panel 4: Regional Responses to the Changing Xi Jinping's Foreign Policy in Indo-Pacific: Realignments, Strategic Adjustment and Institutional Balancing.**

*In-Person Panel*

*4. Security, Geopolitics, and Energy Policy*

Room: 3-405, Waseda University

**Chair** Mong CHEUNG (Associate Professor, School of International  
Liberal Studies, Waseda University )

**Disc.** Mong CHEUNG (Associate Professor, School of International  
Liberal Studies, Waseda University )

Neutralizing Potential Enemies: China's Diplomatic Persuasion and  
Economic Statecraft in Indo-Pacific Realignments

**Hak Yin Li (Tokyo International University)**

ASEAN and Its Management of Relations with China in Recent Years  
**Tai Wei Lim (Soka University)**

How has India Dealt with the China Challenge?

**Prashant Singh (Manohar Parrikar Institute for Defence Studies  
and Analyses )**

Influencing Factors and Potential Consequences of the Spread of  
Anti-China Sentiment in South Korea

**Su Jeong Kang (Chosun University)**

The Central Asian Approach to China's Multiform Influence

**Azhar Serikkaliyeva (Al-Farabi Kazakh National University)**

---

**ThB03: Thursday 10:45 AM - 12:15 PM** *In-Person Panel*  
**Digital Transformation in International Relations: Opportunities, Challenges, and Solutions**

4. Security, Geopolitics, and Energy Policy

Room: 3-406, Waseda University

**Chair** Ejr Cho (Institute for National Security Strategy (INSS))

**Disc.** Sang Keun Cho (Army College)

The Impact of Technology on the Modern State System and Liberal Democracy: A Latourian Perspective

**Ejr Cho (Institute for National Security Strategy (INSS))**

Platformocracy under the Digital Panopticon: Digital Checks and Balances

**IL SEOK OH (INSS)**

Transforming diplomacy with digital technologies: Korea's experiences in Japan

**Wonkyung Rhee (Sophia University)**

---

**ThB04: Thursday 10:45 AM - 12:15 PM** *In-Person Panel*  
**Trust, Hope, Truth: Toward International Organizations, Multinational Corporations, and Global Southern Commitments.**

9. Others: Japanology, Global South, Latin America

Room: 3-606, Waseda University

**Chair** Aigul Kulnazarova (Tama University, School of Global Studies)

**Disc.** Barbara Kratiuk (University of Warsaw)

Policy Learning between China's and Japan's African Cooperation

Summits: The Role of African Agency

**Kenichi Doi (Waseda University)**

**Yuan Wang (Duke Kunshan University)**

Institutions, Ideas, and Interests in Global Norms Creation: A Southern Perspective on Sustainable Development Goals

**ASM Ali Ashraf (University of Dhaka)**

**Syeda Rozana Rashid (University of Dhaka)**

Needs or Interests: Determinants of China's peace engagement through Official Development Assistance

**Yeonju Jung (Stockholm University)**

---

**ThB05: Thursday 10:45 AM - 12:15 PM** *In-Person Panel*  
**International Cooperation in Asia**

5. Democracy and Authoritarianism; The Russo-Ukrainian War & the Crisis in East Asia

Room: 7-207, Waseda University

**Chair** Min Shu (Waseda University)

**Disc.** An-chun Cheng (Utsunomiya University)

The Fate of Democracy and Developmentalism in Malaysia

**Yuichi Sasaoka (Meiji University)**

Chinese Influence on the Development Process of Cambodia:

Analyses of the Relationship between a Decline in International Aid

Coordination and the Shift to Autocracy

**JUICHI INADA (Senshu University)**

China's Global Development Initiative and Its Impact on

International Development and Beyond

**Shino Watanabe (Sophia University)**

Emerging Donors and New Multilateralism: Impact on Traditional Multilateralism

**Hisahiro KONDOH (Graduate School of Humanities and Social Sciences, Saitama University)**

---

**ThB08: Thursday 10:45 AM - 12:15 PM** *In-Person Panel*  
**COVID-19 and new era of Security**

2. Covid-19 Pandemic and International Relations

Room: 3-703, Waseda University

**Chair** Pradeep Singh Chauhan (Kurukshetra University, Kurukshetra)

**Disc.** Just Castillo Iglesias (Adjunct Professor, Autonomous University of Barcelona)

Transformation of the International Order in the Post-pandemic Era: Changes in the Liberal International Order

**Tianchong LI (Aoyama Gakuin University)**

New challenges to Japan's Indo-Pacific vision: COVID-19 and the 2020s 'Kindleberger moment'

**Nikolay Murashkin (JICA Ogata Sadako Research Institute for Peace and Development)**

China-Indonesia's Health Diplomacy in the time of COVID-19 and the Post COVID-19 Pandemic

**Sartika Soesilowati (Airlangga University)**

Subnational governments as troublemakers in Chinese foreign relations: the case of Wuhan and COVID-19 international politics

**Li Mingjiang (Rajaratnam School of International Studies)**

Ratify or Sign? Exploring India's Resistance to the Global Human Rights Order

**Xiaojuan Qiu (East China Normal University)**

---

**ThB09: Thursday 10:45 AM - 12:15 PM** *In-Person Panel*  
**Paradigm Shift in East Asia**

3. Regional Integration and Collaboration in Asia-Indo Pacific, Europe and the World

Room: 3-704, Waseda University

**Chair** Kumiko Haba (Aoyama Gakuin University, Harvard University)

The Geopolitics of Biotech Innovation for Small Powers: Cases of Taiwan and Singapore

**Yujia He (University of Kentucky)**

**Shih-Hsin Chen (National YangMing ChiaoTung University)**

**XUE GONG (Nanyang Technological University)**

The Waning and Waning of Balancing in the Process of International Cooperation: A Study of Trade Interdependence

**Wayne Tan (National Chung Hsing University)**

**Hsun Chang (National Chung Hsing University)**

Paradigm Shift of Regional Economic Cooperation Mechanism in East Asia: The Case of RCEP and CJKFTA

**Haozheng JIANG (Ritsumeikan University)**

Transformation of the Japanese Diplomacy in Peace and Security toward a New World Order: The Case of the Philippines

**Miyoko Taniguchi (Miyazaki University)**

---

**ThB10: Thursday 10:45 AM - 12:15 PM** *Poster Session*  
**poster session**

10. Papers of Graduate Students

Room: 3-709, Waseda University

**Chair** Lauren Power (The University of Tokyo)

**Disc.** Juan Luis Lopez Aranguren (University of Zaragoza (Spain))

The Green in Philippine IR: The State of Philippine Environmental Foreign Policy in the 21st Century

**Kobe Bryan Loterinia (University of the Philippines Diliman)**

---

**ThB12: Thursday 10:45 AM - 12:15 PM** *In-Person Panel*  
**Panel 6: Where are they? Women and gender minorities in politics in East Asia**

*7. Gender Studies*

Room: 7-205, Waseda University

**Chair** Felix Roesch (Coventry University)

**Disc.** Atsuko Watanabe (Kanazawa University)

Geo-Strategic Value of Contested Islands: A Case of The Liancourt Rocks

**Torunika Roy** (Jawaharlal Nehru University )

**Aman Kumar** (Jawaharlal Nehru University)

The Entrenched Ideology of “Ie (Family)” as an Obstacle to Gender Equality in Japan

**Misato Matsuoka** (Teikyo University)

Rediscovering Japanese Traditions of Humanitarian Assistances - Dr. Tetsu Nakamura in Forgotten Afghanistan

**Seiko Mimaki** (Doshisha University)

The Making of Nationalist Manhood in South Korea by the Power of Death

**Dongeun Shin** (Yonsei University)

Women's Political Expression on the Internet and Social Media in Japan

**Aki Tonami** (University of Tsukuba)

---

**ThB13: Thursday 10:45 AM - 12:15 PM** *In-Person Panel*  
**Great Powers and Asia-Indo Pacific**

*8. History of War and Peace*

Room: 7-206, Waseda University

**Chair** Dr Sudhir Parida (University of Delhi)

**Disc.** Andrew Ivanisenko (HSE University)

Canada and the Indo-Pacific: Counterbalancing Media Bias through a Human Security Framework

**Robert Hanlon** (Thompson Rivers University)

**Kenneth Christie** (Royal Roads University)

Strategic choices of Korea and India in the changing international order: Focusing on Responses to the Rapidly Rising China  
Defeat and Democratization: : Italy and Japan after the Second World War

**Ken Ishida** (Chiba University)

Great Powers, Status Conflicts and the Abandonment of Peace

**T. V. Paul** (McGill University)

Power in International Relations: The Case for a Quantum Approach  
**Chengxin Pan** (University of Macau, China)

Tolerance and Media Freedom: Theory and Evidence from Panel Data, 1948–2017

**Wen-yang Chang** (National Chengchi University)

**Yi-Ting Wang** (National Cheng Kung University)

**Greg Chih-Hsin Sheen** (National Cheng Kung University)

---

**ThC01: Thursday 1:30 PM - 3:00 PM** *In-Person Panel*  
**Panel 13: diverse theoretical approaches to regional security**

*4. Security, Geopolitics, and Energy Policy*

Room: 3-404, Waseda University

**Chair** Emilian Kavalski (Jagiellonian University in Krakow (Poland))

**Disc.** Yu-Hua Chen (Akita International University)

From geopolitics to geoeconomics and back. The dwindling role of geoeconomics under multipolarity

**Rafal Ulatowski** (University of Warsaw)

The Political Linkages between the US Strategic Ambiguity and Taiwan's Hedging Policy

**Charles Chong-Han Wu** (National Chengchi University)

China's rise and Japan's response: A New Perspective

**Lisha CHEN** (Lingnan University)

Challenges to the Belt and Road Initiative in the Indo-Pacific: An Analysis of Cancelled Projects

**Phuong Hoang** (National Intelligence University)

---

**ThC02: Thursday 1:30 PM - 3:00 PM** *In-Person Panel*  
**non-alliance strategies of Asia**

*4. Security, Geopolitics, and Energy Policy*

Room: 3-405, Waseda University

**Chair** P C PRASANNA KUMAR (Central University of Kerala)

**Disc.** MD SAHIDUL ISLAM (University of Memphis)

The India Way: Analyzing the Multi-Alignment Foreign Policy during Russia-Ukraine Crisis

**Dr Sudhir Parida** (University of Delhi)

Russia's energy pivot to the East and the new energy game in Northeast Asia

**Shamil Yenikeyeff** (HSE University)

**Tim Reilly** (Arctic Advisory Associates)

**Keun Wook Paik** (Independent researcher and consultant )

---

**ThC03: Thursday 1:30 PM - 3:00 PM** *In-Person Panel*  
**Panel 2: Anthropocene in Climate Governance**

*1. Anthropocene in Asia Pacific and the World*

Room: 3-406, Waseda University

**Chair** Tara Devi Rai (Freie University)

**Disc.** Hiroshi Ohta (Waseda University, SILS)

On the frontlines of climate mobilities management: lessons from Fiji and Vanuatu, to the world

**Liam Moore** (University of Wollongong)

Post-anthropocentric and post-humanistic governance on climate change in Asia-Pacific

**Toyo Kawabata** (Independent researcher)

---

**ThC04: Thursday 1:30 PM - 3:00 PM** *In-Person Panel*  
**Foreign Direct Investment, Business and Development Interest in the Global South**

*9. Others: Japanology, Global South, Latin America*

Room: 3-606, Waseda University

**Chair** Anastasiya Polishchuk (Waseda University)

**Disc.** Ryo Hinata-Yamaguchi (Research Center for Advanced Science and Technology, the University of Tokyo)

Reaffirming an Ontology of Space for International Relations

**Taku Tamaki** (Loughborough University)

To Stay or To Go? : The Sources of Domestic Support for Foreign Direct Investment in Africa

**Inbok Rhee** (Korea Development Institute (KDI) School of Public Policy and Management)

**Joonseok Yang** (Sungkyunkwan University)

Comparative studies of green bond market development in China and Japan

**Jiun-Da Lin** (National Taiwan University)

**Yukino Kobayashi** (National Taiwan University )

Towards Situated Decolonisation: Theorising Contexts in IR Knowledge Production

**Beverley Loke** (The Australian National University)

**Catherine Owen** (University of Exeter)

From Self-Sufficiency Aspiration to the Liberalization of Rice Trade:  
The Changing Dynamics of Rice Policies in the Philippines (2010-2022)

Handle with “care”: Protecting China’s overseas interests through  
‘forward-face’ roles of state business actors

**XUE GONG (Nanyang Technological University)**

Inequalities in life and job satisfaction in China? A parallel  
longitudinal analysis

**Lukasz Czarnecki (Pedagogical University of Krakow)**

Evaluating the Achievements of Tripartite Environment Ministers  
Meeting in Managing Transboundary Air Pollution

**Wing Yan Yeung (College of Professional and Continuing  
Education, the Hong Kong Polytechnic University)**

Free and Open Indo-Pacific: Japanese FOIP Maritime Visions

**Garren Mulloy (Daito Bunka University)**

Entangled Hegemonies: China’s Rise and Change in International  
Order

**Matthew David Stephen (WZB Berlin)**

Changing perceptions and shifting strategies: Analyzing Japan’s new  
Pacific Strategy.

**David Adebahr (Kyoto University)**

Research integrity in international research collaborations: New  
responsibilities of higher education and research

**Takehito Kamata (Sophia University)**

---

**ThC05: Thursday 1:30 PM - 3:00 PM**  
**alliance dilemma and Indo-Pacific**

*Poster Session*

*4. Security, Geopolitics, and Energy Policy*

Room: 7-207, Waseda University

**Chair** Niranjan Barik (Ravenshaw University)

**Disc.** Bann Seng Tan (Ashoka University)

Vietnam's Grand Strategic Adjustment Has Not Led to Its  
Equidistance between China and the United States

**Bich Tran (Lee Kuan Yew School of Public Policy)**

Trust and mistrust in the US-Japan alliance

**You Xu (Waseda University)**

The role of navies in statecraft and the East Asian security order:  
shared strategic imaginaries and realities in the collaboration  
between the Japanese Maritime Self-Defence Force (JMSDF) and  
the Royal Australian Navy (RAN)

Japan's Abduction Mechanism: Japan's Victim identity and Normal  
State identity

**Mijin Noh (Yonsei University)**

---

**ThC07: Thursday 1:30 PM - 3:00 PM**  
**Private Military and security**

*In-Person Panel*

*5. Democracy and Authoritarianism; The Russo-Ukrainian War & the Crisis in East  
Asia*

Room: 3-702, Waseda University

**Chair** Koji Haraguchi (Yamanashi Gakuin University)

**Disc.** Li Mingjiang (Rajaratnam School of International Studies)

Threat Perception Variation of China in South Korea

**Jiye Kim (Ritsumeikan Asia Pacific University; University of  
Sydney)**

**Arpit Raswant (Deakin University)**

A Critical Assessment on the Emerging Role of Private Military and  
Security Companies in Russia-Ukraine Crisis

**Anuradha Oinam (Jawaharlal Nehru University, New Delhi)**

**Sanamacha Oinam (IGNOU)**

ASEAN, the international order, and Russia’s invasion of Ukraine.

**Matteo Dian (University of Bologna)**

---

**ThC09: Thursday 1:30 PM - 3:00 PM**  
**Regional Integration In Asia**

*In-Person Panel*

*3. Regional Integration and Collaboration in Asia-Indo Pacific, Europe and the  
World*

Room: 3-704, Waseda University

**Chair** Nimid Ang (Ramkhamhaeng University)

**Disc.** T. H. Hall (University of Oxford)

Atomizing Multiplicity? Reconceiving Difference in Relationality

**Atsuko Watanabe (Kanazawa University)**

**Felix Roesch (Coventry University)**

---

**ThC10: Thursday 1:30 PM - 3:00 PM**  
**Group 2: Climate**

*In-Person Panel*

*10. Papers of Graduate Students*

Room: 3-709, Waseda University

**Chair** Grant Dawson (University of Nottingham, Ningbo)

**Disc.** Lyubov G. Mincheva (Sofia University)

China’s Air Pollution Prevention and Control Action Plan – A Policy  
Critique

**Zheng Cui (The Fletcher School of Law and Diplomacy, Tufts  
University )**

Security Alliances and Technological Innovation: US military bases  
and industrial clusters in developing Asia

**Chatchada Kumlungpat (National Graduate Institute for Policy  
Studies )**

The Climate Change Club: Examining the Global Environmental  
Discourse from a Vantage Point of the Global South

**Akash Bhagat (Jawaharlal Nehru University)**

**Priyanka Yadav (Jawaharlal Nehru University, India)**

**Torunika Roy (Jawaharlal Nehru University )**

---

**ThC12: Thursday 1:30 PM - 3:00 PM**  
**Panel 9: Politics and Gender Gap**

*In-Person Panel*

*7. Gender Studies*

Room: 7-205, Waseda University

**Chair** Yuan Zhou (Kobe University)

**Disc.** Nina Oiki (Waseda University )

Why Autocrats Adopt Gender Quotas

**Yuan Zhou (Kobe University)**

**Ghashia Kiyani (Naval Postgraduate School)**

**Charles Crabtree (University of Michigan)**

Balancing a Rising Asia with Historical U.S. Ties: Lessons from Latin  
America and the Caribbean

**Jacqueline Braveboy-Wagner (City University of New York)**

**Betty Nelly Sedoc-Dahlberg (Independent Scholar)**

---

**ThC13: Thursday 1:30 PM - 3:00 PM**  
**Peace Building and Peace Agreements**

*In-Person Panel*

*8. History of War and Peace*

Room: 7-206, Waseda University

**Chair** Rikard Jalkebro (Anwar Gargash Diplomatic Academy)

**Disc.** Yuma Osaki (Doshisha University)



Rethinking the Boundaries of Peacebuilding in the Asia-Pacific and Beyond: A Conceptual Analysis

**Kazushige Kobayashi** (Graduate Institute of International and Development Studies)

**Keith Krause** (Graduate Institute of International and Development Studies)

**Xinyu Yuan** (Centre on Conflict, Development and Peacebuilding, Graduate Institute of International and Development Studies, Switzerland)

Towards Inclusive Historical Narratives in Asia Pacific: Designing A Conflict Resolution Model in International Peace Studies Classrooms

**Emilia S. Heo** (Ritsumeikan Asia Pacific University)

Operation of International Aviation Refugee Rescue System in NextGen's Perspective

**Yeibin Kim** (Embry Riddle Aeronautical University, Korea Aerospace University)

---

**ThC14: Thursday 1:30 PM - 3:45 PM** *In-Person Panel*

**Panel 12: Experimental Approaches to International Relations of the Asia-Indo-Pacific**

*4. Security, Geopolitics, and Energy Policy*

Room: 3-710, Waseda University

**Chair** Atsushi Tago (Waseda University)

**Chair** Attawat Assavanadda (University of Hong Kong )

**Disc.** Samuel Chan (University of Hong Kong)

**Disc.** Viet Hung Nguyen Cao (Waseda University)

**Disc.** weifang xu (Florida State University)

Through the lens of energy transnationalism the prospects of cross-border energy trade in Asia

**Akanksha Singh** (Temple University, Tokyo, Japan)

Global Role of the Asia-Indo Pacific Region in Climate and Energy Security

**Hitomi Kimura** (Otsuma Women's University)

China in the Eyes of Its Neighbours: What Shapes Southeast Asians' View of the Rise of China

**Attawat Assavanadda** (University of Hong Kong )

Testing Attraction: An Experimental Approach to Soft Power

**Samuel Chan** (University of Hong Kong)

Post fait-accompli crisis de-escalation: An experiment in Japan

**Viet Hung Nguyen Cao** (Waseda University)

Pride and Prejudice: The Dual Effect of "Wolf Warrior" Diplomacy on Domestic and International Audiences – Machine Learning and Cross-national Experimental Evidence

**weifang xu** (Florida State University)

---

**ThD05: Thursday 3:15 PM - 4:45 PM** *In-Person Panel*  
**panel 27**

*4. Security, Geopolitics, and Energy Policy*

Room: 7-207, Waseda University

**Chair** Sebastian Biba (Goethe University Frankfurt)

**Disc.** Hsin-Chi Lu (Graduate Institute of International Politics, NCHU (National Chung Hsing University))

Interstate Relations and Military Conduct - Analysis of the activities of Chinese military aircraft around Taiwan

**Eli Y. Huang** (Graduate Institute of East Asian Studies, National Cheng-Chi University)

A Flashpoint of Two Exceptionalisms: How the U.S.-Sino Rivalry Bends the Rules of AIDZs?

**Youcheer Kim** (Dukung Women's University )

Confronting Disaster and Conflict Nexus Double trouble: The threat of human and climate-induced disasters in the Philippines

**Rikard Jalkebro** (Anwar Gargash Diplomatic Academy)

Japan's Defense Role in a Taiwan Strait Contingency

**Ryo Hinata-Yamaguchi** (Research Center for Advanced Science and Technology, the University of Tokyo)

**Shang Su Wu** (Rabdan Academy)

Neocolonial Stage Performance: Japan's Human Securities and the Utilitarian Nature of its Westphalian Behemoth

**Andrei Yamamoto** (Ryukoku University)

---

**ThD06: Thursday 3:15 PM - 4:45 PM** *In-Person Panel*  
**Panel 1**

*3. Regional Integration and Collaboration in Asia-Indo Pacific, Europe and the World*

Room: 3-701, Waseda University

**Chair** Jacqueline Braveboy-Wagner (City University of New York)

**Disc.** Asima Sahu (Ravenshaw University)

Effective Multilateralism: Reducing Systemic Financial Risk through Improvement of Financial Safety Nets

**Lyubov G. Mincheva** (Sofia University)

Thai Domestic Agents Perception Towards China and Its Impacts on Thai-China Relations.

**Nimid Ang** (Ramkhamhaeng Univesity)

Middle East Looks to the East? Sino-Middle East Relations in a 'Multiplex World'

**Mojtaba Mahdavi** (University of Alberta)

EV-isation in Europe and their impact

**Hiroshi TANAKA** (Ritsumeikan University)

The Maxima Moment for the West: A History of NATO's Expansion and the War in Ukraine

**Akash Bhagat** (Jawaharlal Nehru University)

---

**ThD08-V: Thursday 3:15 PM - 4:45 PM** *Virtual Panel*  
**Panel 1: Religion and Philosophy**

*6. Religion and Philosophy*

Room: 3-703, Waseda University

**Chair** Ching-Chang Chen (Ryukoku University)

**Disc.** Hiro Katsumata (Tohoku University, Japan)

American Hegemony, China and the Russo-Ukraine War

**Benedict DeDominicis** (Catholic University of Korea)

Impossible Interregionalism. The EU's political and security relations with Japan and China (1991-2022) and its limited presence in East Asian Affairs .

**Just Castillo Iglesias** (Adjunct Professor, Autonomous University of Barcelona)

Buddhism as Soft Power strategy: Emergence of Buddhist Diplomacy in South Asia

**Stanzin Lhaskyabs** (Jawaharlal Nehru University)

---

**ThD09: Thursday 3:15 PM - 4:45 PM** *In-Person Panel*  
**Indo-Pacific and Trade, Development**

*3. Regional Integration and Collaboration in Asia-Indo Pacific, Europe and the World*

Room: 3-704, Waseda University

**Chair** Matthew David Stephen (WZB Berlin)

**Disc.** Kenichi Doi (Waseda University)

China in Global Digital Trade Governance: Implications for Development

**Yujia He (University of Kentucky)**

**Ka Zeng (University of Arkansas)**

A Comparative Analysis of Japan and South Korea's Decision-Making in Response to the Rise of China 1992-2022

**Kina Kunz (University of Otago)**

Japanese regional collaboration: Peace through development in turbulent times

**Chris Pope (Fukuoka University)**

India's 'Strategic Autonomy' against the Backdrop of the Russia-Ukraine Conflict and the US-China Decoupling: Main Features and Implications for the Asia-Pacific Region

**Kirill Likhachev (St. Petersburg State University, School of International Relations)**

How Middle Powers Reshape Geopolitics: India and South Korea's response to the 2022 Ukraine Crisis

**Kuyoun Chung (Kangwon National University )**

**Priyanka Yadav (Jawaharlal Nehru University, India)**

Multilateralism through which channel? A comparative analysis of China's funding behavior between the United Nations Development System and multilateral development banks

**Xueying Zhang (Fudan University)**

---

#### **ThD13: Thursday 3:15 PM - 4:45 PM**

*In-Person Panel*

##### **cross- cultural collaboration**

*8. History of War and Peace*

Room: 7-206, Waseda University

**Chair** Jojin John (Mahatma Gandhi University, India)

**Disc.** MD SAHIDUL ISLAM (University of Memphis)

Alliance Reliability, Wedge Strategies, and China's Partnerships with U.S. Allies

**Nien-chung Chang-Liao (Institute of Political Science, Academia Sinica)**

**Wei-hao Huang (national sun-yat sen university)**

Cross-Cultural Collaborations in the US and Japan: The Case of GCP in Tokyo

**Andrew Poeschel (Ohio University)**

Political Economy of Decoupling and Friend-Shoring of Japanese MNCs in China

**Jiakun Jack Zhang (University of Kansas)**

**Timothy Cichanowicz (University of Kansas)**

**Sam Vorthers (University of California, Irvine)**

North Korean Climate Diplomacy: Engagement, Priorities, and Opportunities for Collaboration.

**Cesare M. Scartozzi (CGIAR, Alliance Bioversity and CIAT)**

**Gordon Kang (S. Rajaratnam School of International Studies, Nanyang Technological University)**

The empire has no clothes? The UK, the Indo-Pacific 'tilt', and bargaining for a role in Southeast Asia

**Scott Edwards (University of Leeds)**

**Robert Yates (University of Bristol)**

---

#### **ThD14-V: Thursday 3:15 PM - 4:45 PM**

*Virtual Panel*

##### **Asia and Indo-pacific**

*3. Regional Integration and Collaboration in Asia-Indo Pacific, Europe and the World*

Room: 3-710, Waseda University

**Chair** Shino Watanabe (Sophia University)

**Disc.** Abhimanyu Rajshekar-Falconer (The University of California, Irvine)

Conference Diplomacy and Paris Climate Agreement

**Pooja Sehbag (Jawaharlal Nehru University, New Delhi)**

Neosecuritisation: an analysis of North Korean refugee sur place

**Dosol Nissi Lee (University of Copenhagen)**

Order by Exclusion in the Indo-Pacific: Implications of Security Collaboration and Military Interoperability under AUKUS

**Zeno Leoni (King's College London)**

**Sarah Tzinieris (King's College London)**

"Past and Present: The Impossible multilateralism in a world in transition"

**Miguel Vecino (Inter. Rel Historian. Independent researcher.)**

Organisational perspectives on Providing Security Demands in the Indian Ocean: A Case Study of the IORA

**Abhilash Kolekar (Jawaharlal Nehru University)**

---

#### **ThD10: Thursday 3:15 PM - 4:45 PM**

*In-Person Panel*

##### **conceptualization of Indo-Pacific**

*10. Papers of Graduate Students*

Room: 3-709, Waseda University

**Chair** Wonkyung Rhee (Sophia University)

**Disc.** Hyoung-kyu Chey (National Graduate Institute for Policy Studies (GRIPS))

Middle Power Rivalry and the Five Power Defence Arrangements at Fifty: A longitudinal analysis of threat perceptions and FPDA security cooperation in the Indo Pacific

**Koichi Yoneda (National Graduate institute for Policy Studies)**

Gender and Peace: Women Building Peace in the Korean Peninsula

**Torunika Roy (Jawaharlal Nehru University )**

contested Indo-Pacific: exploring the Asean africa multilateralism

**Abdirisak mohamed shaqale (PhD candidate in international relations at ankara Yildirim beyazit university, Turkiye. )**

Strong in appearance but weak in reality: network power, institution and norms in China's restraint economic coercive behaviour towards India

**XUE GONG (Nanyang Technological University)**

The Making and Unmaking of the Indo-Pacific: A Constructivist Analysis

---

#### **ThD11: Thursday 3:15 PM - 4:45 PM**

*In-Person Panel*

##### **Panel 4: Ethnic Conflicts and Political Communication**

*6. Religion and Philosophy*

Room: 7-212, Waseda University

**Chair** Jelica Stefanovic-Stambuk (University of Belgrade Faculty of Political Sciences)

**Disc.** Pei-ying Lin (National Chengchi University)

The Use of Religious Symbols as Identity Politics in Political Communication Activities in Indonesia

**Lestari Nurhajati (LSPR Communication and Business Institute)**

**Xenia Angelica Wijayanto (Institut Komunikasi dan Bisnis LSPR)**

Decoupling Buddhism from Myanmar: a potential future of religion in transforming inter-regional conflict

**Phanuphat Chattragul (Chiang Mai University)**

Recasting the regional security architecture in the Indo-Pacific: A three-layer model

**Thomas S. Wilkins (University of Sydney)**

---

**ThE01-V: Thursday 5:00 PM - 6:30 PM** *Virtual Panel***Panel 1: International Relations and Gender Chair Yoshie HORI, Discussant Yukiko Kumamoto***7. Gender Studies*Room: 3-404, Waseda University**Chair** Yoshie HORI (Waseda University)**Disc.** Yukiko Kumamoto (Rikkyo University)

Women Empowerment Status under MGNREGA in Haryana, Punjab and India

**Parveen Kumar Nimbrayan** (Chaudhary Charan Singh Haryana Agricultural University, Hisar)**Shivam Shivam** (Chaudhary Charan Singh Haryana Agricultural University, Hisar)**Ved prakash Luhach** (Chaudhary Charan Singh Haryana Agricultural University, Hisar)

Womonomics and the role of women in Japan

**Ivaila Aleksova-Mayer** (PhD Graduate from Sofia University, St. Kliment Ohridski, Bulgaria)

Operationalization of WPS Agenda in the Military

**Eiko Iwata** (National Institute for Defense Studies, Japanese Ministry of Defense)

---

**ThE03-V: Thursday 5:00 PM - 6:30 PM** *Virtual Panel***virtual papers accepted (to be included in the dedicated 'virtual day' conference):***1. Anthropocene in Asia Pacific and the World*Room: 3-406, Waseda University**Chair** Jacqueline Braveboy-Wagner (City University of New York)**Disc.** Jelica Stefanovic-Stambuk (University of Belgrade Faculty of Political Sciences)

Is mainstreaming poverty just for developing countries?

**Shu Fukuya** (Johns Hopkins University)

Is Covid-19 about fragmentation or new opportunities for cooperation in the returning era of realism?

**Anna Kotova** (St. Petersburg State University)

Assessing the Impact of COVID-19 on Higher Education in South Asia

**Dr. Ritu Chauhan** (MCM DAV College for Women, Panjab University, Chandigarh)

Indian Liminality as an Ontological Position in the Asia Pacific

**Abhishank Mishra** (Jawaharlal Nehru University)

Risk Society and Sinking Village: Case study of the Indian Himalayas

**Tanushree Malakar** (Jawaharlal Nehru University)

---

**ThE05-V: Thursday 5:00 PM - 6:30 PM** *In-Person Panel***The Possibilities of Asia-Pacific Area Studies for Promoting Interdisciplinary Research***3. Regional Integration and Collaboration in Asia-Indo Pacific, Europe and the World*Room: 7-207, Waseda University**Chair** Toshihiko Kishi (Kyoto University)**Chair** Fumiharu Mieno (Kyoto University)**Chair** Yusuke Murakami (Kyoto University)**Disc.** Kumiko Haba (Aoyama Gakuin University, Harvard University)

Beyond the Dismantling World Order: An Asian-Pacific Paradigm?

**Yusuke Murakami** (Kyoto University)

Border Shifting and Remaining in Modern East Eurasia

**Taisho NAKAYAMA** (Kushiro Public University of Economics)

On Being a 'Gaijin' in Mid-Twentieth-Century Japanese Society: Narratives by Japanese-born Turkic Muslim migrants

**Sayoko Numata** (Tokyo University of Foreign Studies)

Embracing the Washington Consensus: Beijing's Seamless

Developmental Strategy from its Domestic Politics to UN Diplomacy

**Tomoko Takahashi** (Kyoto University)

---

**ThE06-V: Thursday 5:00 PM - 6:30 PM***Virtual Panel***Panel 1***4. Security, Geopolitics, and Energy Policy*Room: 3-701, Waseda University**Chair** Philipp G. Khanin (Saint-Petersburg State University, associate professor)**Disc.** Taku Tamaki (Loughborough University)

THE NEW OUTER SPACE ORDER AND THE SECURITY DILEMMA FOR INDIA

**Akanksha Kalyan** (Jawaharlal Nehru University)

Energy Security and Development: Pakistan's Early Atomic

Programme between International Cooperation and Competition

**Mauro Elli** (Università degli Studi di Milano)**Giulia Lami** (Università degli Studi di Milano)

France's Indo-Pacific Strategy after AUKUS: What Next?

**Aleksei Chikhachev** (Saint Petersburg State University, School of International Relations)

Taiwan's international strategy in a context of increased international uncertainty

**Just Castillo Iglesias** (Adjunct Professor, Autonomous University of Barcelona)

Does Trade Fail To Deter China from Conflicts? - Evidence from Mixed-Method Approach

**Minh Nam Pham** (University of California, San Diego)

From dialogue to pressure? (In)consistency of Japanese North Korea Policy 2012-2022

**Franziska Schultz** (Bowling Green State University)

---

**ThE07-V: Thursday 5:00 PM - 6:30 PM***Virtual Panel***New Challenges for the Post Covid-19 Southeast Asia***2. Covid-19 Pandemic and International Relations*Room: 3-702, Waseda University**Chair** Soavapa Ngampramuan (Ramkhamhaeng University)**Disc.** Christian Ploberger (Rajamangala University of Technology Tawan-OK)

COVID19: a failure of global governance and regional organisation response and its implications for addressing climate change at the regional level

**Christian Ploberger** (Rajamangala University of Technology Tawan-OK)

Impacts of Carbon Deposition on Glaciers: One Belt One Road a Current and Future Scenarios

**Soavapa Ngampramuan** (Ramkhamhaeng University)

ASEAN Recovery plan for Covid-19

**Soavapa Ngampramuan** (Ramkhamhaeng University)

---

**ThE12-V: Thursday 5:00 PM - 6:30 PM***Virtual Panel***virtual papers***3. Regional Integration and Collaboration in Asia-Indo Pacific, Europe and the World*Room: 7-205, Waseda University**Chair** Misato Matsuoka (Teikyo University)**Disc.** Hiro Katsumata (Tohoku University, Japan)

Vietnam and the minilateral cooperation

**Barbara Kratiuk (University of Warsaw)**

Current State of Research on Social Inclusion in Asia and the Pacific:

Focus on Ageing, Gender and Social Exclusion

**Vaibhav Verma (Kurukshetra University Kurukshetra)**

China's growing influence in Central Asia through its Belt and Road Initiative

**Lyailya Nurgaliyeva (Takasaki City University of Economics)**

Antifragility and the Indo-Pacific

**Rebecca Law, PhD (Research Innovations, Inc.)**

Shaping the South China Sea: how China is creating and adapting international norms through economic and political realignment.

**Gleice Miranda (King's College London)**

**Valentina Maljak (Faculty of Law, University of Zagreb)**

Interpreting Ontological Engagement Parameters in Foreign Policy

Narratives: Deconstructing North Korea's Climate Diplomacy

**Gordon Kang (S. Rajaratnam School of International Studies, Nanyang Technological University)**

---

**ThE13-V: Thursday 5:00 PM - 6:30 PM**

*Virtual Panel*

**Group 3rd, 5th, 7th, 8th virtual papers**

*10. Papers of Graduate Students*

Room: 7-206, Waseda University

**Chair** Pradeep Singh Chauhan (Kurukshetra University, Kurukshetra)

**Disc.** Songying Fang (Rice University)

"Legal interaction between Russia and South Korea. Prospects for the development of Russian-South Korean relations in the field of international cooperation

**Andrew Ivanisenko (HSE University)**

To Hedge or Wedge? Geographic Proximity, Signaling, and Power Transition

**Junyang Hu (University of Chicago )**

Feeling the past in the present: The 'rachi mondai' through the politics of emotions

**Phuong Anh Nguyen (University of St Andrews)**

China's standing position in the Ukrainian crisis

**Akio Takahara (University of Tokyo)**

# Index of Participants

Adachi, Kenki	WD11, WB08
Adebahr, David	ThC09
Adiong, Nassef Manabilang	TD07
Aind, Mabel	WB04
Alakoc, Burcu Pinar	ThB01
Aleksova-Mayer, Ivaila	ThE01-V
Alvarado Romero, Karla Estephany	WD07, TD09
Amae , Yoshihisa	TE05
An, Hyunjin	WB10
Andaya, Raymond	TE08
Ang, Nimid	WE04, WC13, ThC09, ThD06
Annaka, Susumu	WE08
Aranguren, Juan Luis Lopez	TC06, ThA04, ThB10
Arokiaraj P, Johny	TC02
Asano, Toyomi	TE05
Ashbee, Edward	ThA10
Ashraf, ASM Ali	ThB04, TC02
Asmita, Ananya	TE14
Assavanadda, Attawat	ThC14, ThA04
Ataka, Hiroaki	WA03, TE01
Azim, Saima	WC12
Barik, Niranjan	WD09, TE14, ThC05
Barik, Nitish Nivedan	TE14
Bhagat, Akash	WC10, ThD06, ThC10, TE02
BI, XINYU	TE12
Biba, Sebastian	WC04, WB07, ThD05
Blocksome, Patricia	TC07
Braveboy-Wagner, Jacqueline	ThE03-V, ThD06, ThC12
Bubpasiri, Tippiarat	TC05
Carey, Henry (Chip)	ThA07
Casagrande, Sara	WC07
Casil, Vincent	TD07
Castillo Iglesias, Just	ThD08-V, ThB08, ThE06-V
Chaban, Natalia	WE06
Chadha, Astha	WB06, WA14
Chamberlain, Paul	WB02
Chan, Samuel	ThC14
Chang, Hsun	ThB09, TE08
Chang, Wen-yang	WE06, ThB13
Chang-Liao, Nien-chung	WE06, ThD13
Chattragul, Phanuphat	WC01, WB13, ThD11
Chatty, Rishab	TC06
Chauhan, Dr. Ritu	ThE03-V
Chauhan, Pradeep Singh	WA06, ThB08, ThE13-V
Chen, Ching-Chang	TC11, WC11, TD09, ThD08-V
CHEN, Lisha	ThC01
Chen, Shih-Hsin	ThB09
Chen, Yu-Hua	WE07, ThC01
Cheng, An-chun	WA06, ThB05
Cheng, John	WA08
Cheng, Manxi	ThA03
Cheung, Hubert	TC14
CHEUNG, Mong	ThB02, WE07
Chey, Hyoung-kyu	WE13, ThD10
Chikhachev, Aleksei	TE07, ThE06-V
Cho, Ejr	ThB03, ThA01
Cho, Esol	TD09
Cho, Sang Keun	ThB03

Cho, Sunghee	WB07, WD07, WC07
Cho, Young Chul	TC11, TD11
Chohwanglim, Ngipwem Rebecca	TD09
Choi, Eunmi	TD14
Choi, Inho	WA10, TC14
Christiansen, Thomas	WE06
Christie, Kenneth	ThB13
Chun, Jahyun	TE05, TC05
Chung, Kuyoun	ThD09, TE11
Cichanowicz, Timothy	ThD13
Concha, Jerry	WB10
Crabtree, Charles	ThC12
Cross, Kyoko	TE05
Cui, Zheng	ThC10
Czarnecki, Lukasz	WE08, ThC04
Dallago, Bruno	WE07, WC07
D'Ambrogio, Enrico	WE08
Dawson, Grant	WD06, ThC10
DeDominicis, Benedict	ThD08-V
Dian, Matteo	WC06, ThA09, ThC07, WB10
Doell, Cynthia	TE09
Doi, Kenichi	ThB04, ThD09, TE02
Donnelly, Michael	WA08
Durão, Rita	WD01
Dureha, Avantika	TD04, WB01
Edwards, Scott	TD06, ThD13
Elli, Mauro	ThE06-V
Endo, Masahisa	WE08
Engel, Susan N.	ThA09, WC08, TE10
Enkhsaikhan, Jargalsaikhan	TE06
Erosa, Marcela	WE12
Fairuza, Fathia	TE08
Fang, Songying	ThE13-V, TD02
Flores, Roberto	TE13
Frndjibachian, Mai	WE14
Fu, Ronan Tse-min	WE06, WA13
Fukunaga, Yuka	WE06
Fukuya, Shu	ThE03-V
Fung, Calvin	WC03
Ghosh, Udit	TD04
Gong, Lina	WC07, TD04, WD01
GONG, XUE	ThC04, ThB09, ThD10
Gustafsson, Karl	WD11, TD06
Haba, Kumiko	TD06, ThB09, WB01, ThE05-V
Hah, Xian Bing Kelvin	WC10
Hall, T. H.	ThC09
Hamanaka, Shingo	WA06, WD06
Hamanaka, Shintaro	WA09
Han, Enze	WA13, WB01
Hanlon, Robert	WC12, ThB13
Haque, Ariful	TC10
Haraguchi, Koji	TE01, ThC07
Hastey, Joshua	TC07
Hatakeyama, Sumiko	TE06
He, Yujia	ThD09, ThB09
Heo, Emilia S.	ThC13
Hidasi, Judit	TC12
Hinata-Yamaguchi, Ryo	ThC04, ThD05

# Index of Participants

Hirono, Miwa	WC06
Hisada, Yuriko	TE14
Hoang, Phuong	ThC01
Hong, Jiheon	WC13, ThA10
HORI, Yoshie	TC12, TE12, ThE01-V
Horiuchi, Masataka	TC14
Hsueh, Chien-wu Alex	WA13, WC11
Hu, Junyang	ThE13-V
Huang, Eli Y.	ThD05
Huang, Fang-Yi	WD12
HUANG, MIKE CHIA-YU	WC04, WE13
Huang, Wei-hao	WE06, ThD13
Hudson, Peter J	WE12, TC02
Husseini, Souzan	ThA09, WB10
Hwang, Hyejin	TE14
Hwang, Jihwan	WD01
Ikeda, Josuke	WE04
INADA, JUICHI	ThB05
Inoue-Hanzawa, Mika	TD03-V
Irsadanar, Rafyoga Jehan Pratama	WD09, WA10
Ishida, Ken	ThB13
ISLAM, MD SAHIDUL	WA07, ThC02, ThD13
Ivanisenko, Andrew	ThB13, ThE13-V
Iwata, Eiko	ThE01-V
Jalkebro, Rikard	WC06, TE09, ThB01, ThC13, ThD05
JIA, Ren-shan	ThA01
JIANG, Haozheng	ThB09
John, Jojin	TE09, ThD13, ThA10
Johnson, Alanna	ThB01
Joksimovic, Jadranka	WA03, WB08
Jones, Catherine	WC06, WD01, TE13, TC10
Joyce, Meri	TE06
Jung, Yeonju	ThB04, WD12, TE13
Kageyama, Yuuka	WE12
Kalyan, Akanksha	ThE06-V
Kamata, Takehito	ThC09, TE11
Kamei, Miho	WD03
Kameyama, Yasuko	WE02
Kamiya, Megumi	TC05
Kang, Gordon	ThE12-V, ThD13
Kang, Su Jeong	ThB02
Kato, Gento	WE08
Kato, Hiroaki	TC05
Katsuma, Yasushi	WE08
Katsumata, Hiro	WD09, ThD08-V, ThE12-V, TE13
Kavalski, Emilian	TD09, WC12, ThC01
Kawabata, Toyo	ThC03
Kawaguchi, Chigumi	WE04
Kemala, Hilda	WB03
Kennis, Anke	WB06
Khan, Saira	WD12, WA10
Khanin, Philipp G.	WA09, ThE06-V, TE14
Khanina, Olga	TC10
Khemanitthathai, Sirada	WB01
Khudoley, Konstantin	TD03-V, ThA10
Kihara-Hunt, Ai	TE08
Kikuchi, Tomoo	WE14, WB03
Kim, Claudia Junghyun	WE13

Kim, Hyun	WA10
Kim, Jiye	WB06, ThC07
Kim, Sung	TD14
Kim, Sunil	TD07, WA09, WC08
Kim, Yeibin	ThC13
Kim, Yongmin	TD14, TE13
Kim, Youcheer	ThD05
Kimura, Hitomi	ThC14
Kimura, Kan	TD14
Kishi, Toshihiko	ThE05-V
Kiyani, Ghashia	ThC12
Kobayashi, Kazushige	TD07, ThC13
Kobayashi, Tetsuro	WD07
Kobayashi, Yoshiki	TD04, WB04, ThB01
Kobayashi, Yukino	ThC04
Koduvayur, Varsha	TC07
Koga, Kei	WC03
Kolekar, Abhilash	ThD14-V
Komatsu, Shiro	TD03-V
KONDOH, Hisahiro	ThB05
Korwatanasakul, Upalat	WE08
Kos-Stanisic, Lidija	ThA09, WB01, TC10
Kotova, Anna	ThE03-V, TE14
Kratiuk, Barbara	ThB04, ThE12-V, TC02
Krause, Keith	ThC13
Kristensen, Peter Marcus	WE14, WB03
Kudo, Yasuki	TE11
Kuhn, Felix	WC13, WB03
Kulnazarova, Aigul	TD04, ThB04
Kumagai, Naoko	TE05, TD02
KUMAR, P C PRASANNA	ThC02, TC10
Kumar, Aman	ThB12
KUMAR, SUNIL	TC06
Kumlungpat, Chatchada	ThC10
Kunnamas, Natthanan	WC13
Kunz, Kina	ThD09
Kuo, Wei-shan	ThA01
Kuramoto, Yukiko	ThE01-V, WD12
Kushner, Barak	TE05
Lami, Giulia	ThE06-V
Lang, Bertram	WB07
Law, PhD, Rebecca	ThE12-V
LE, YU	TE12
Lee Perez, Fabio	WA06
Lee, Byoungha	TD11
Lee, Dongkeun	WC13
Lee, Dosol Nissi	ThD14-V
Lee, Kangkyu	WE01
Lee, Moonyoung	TE05
Lee, Soyoung	TD02
Leongpanyawong, Phakkanan	WC13
Leoni, Zeno	WE14, ThD14-V
Iertpusit, sivarin	WE08
Lhaskyabs, Stanzin	WD09, ThD08-V
Li, Hak Yin	ThB02, TC05
LI, Hao	WD07, WE01, WB02
Li, Lingqun	WA03
Li, Tao	TD02



# Index of Participants

Li, Tianchong	ThB08	MOINUDDIN, Mustafa	WD03
Li, Xiaojun	WA13, WD01, WB01, TD02	Moore, Liam	ThC03
LI, XIAOYUAN	WC13	Morada, Noel M.	TD03-V
LI, YAJIAO	TC12	Morishige, Daichi	ThA04
Li, Yue	TE01, WA14	Mullins, Sam	TC07
Liao, Kai	WC04	Mulloy, Garren	WC06, ThC09
Likhachev, Kirill	ThD09	Murakami, Yusuke	ThE05-V
Lim, Ji Hye	TE08	Murashkin, Nikolay	ThB08
Lim, Tai Wei	ThB02	Murphy, Thomas	WB06
Lin, Jiun-Da	ThC04, WD12	na Thalang, Chanintira	WC01
Lin, Joshua	WD07	Nagy, Stephen R.	WB06
Lin, Pei-ying	TC11, ThD11	Nakamura, Yukiko	TC12
Lin, Scott Y.	WD06	Nakano, Ryoko	WD11, WC11
Lin, Thung-hong	WC08	NAKAYAMA, Taisho	ThE05-V
Liu, Dongshu	WE13, TE01, WB01	Nam, Kijeong	TE05
LIU, Hongyi	WE08	Ngampramuan, Soavapa	ThE07-V
Liu, Hsiaopong	WD06	Nguyen Cao, Viet Hung	ThC14, TE01
Liu, Qin	TD02	Nguyen, Dat Tan	WA07, TD07
Liu, Samuel	WD07	Nguyen, Phuong Anh	ThE13-V
Liu, Tony Tai-Ting	TC11, TE08	Nimbrayan, Parveen Kumar	ThE01-V
Loke, Beverley	ThC04	Nishikai, Hiroshi	TD03-V
Loterinia, Kobe Bryan	ThB10	Nishikawa, Yukiko	TD03-V
Lu, Hsin-Chi	ThD05, TD02	Noh, Mijin	ThC05
Lu, Yeh-chung	ThA01, WB03	Numata, Sayoko	ThE05-V
Luga, Jose Mathew	WB13	Nurgaliyeva, Lyailya	ThE12-V
Luhach, Ved prakash	ThE01-V	Nurhajati, Lestari	ThD11, WE01
Mahdavi, Mojtaba	ThD06, TE08	Obi, Michiyo	WE02
MAISAWA, TATSUYA	TD14	Ochiai, Emi	TC12
Malakar, Tanushree	ThE03-V	OH, IL SEOK	ThB03, ThA07
Malik, Asmiati	TD06	Ohashi, Fumie	TE12
Maljak, Valentina	ThE12-V	Ohta, Hiroshi	WE02, ThC03, WA02
Mangold, Marcel	WE07	Ohtomo, Takafumi	WB02
Maslow, Sebastian	WD11, TD14, WC11, WE01	Oiki, Nina	WD12, ThC12, WE12
Matsumoto, Asuka	WA09	Oinam, Anuradha	WD06, ThC07, TE11
MATSUMOTO, EIKO	WB02	Oinam, Sanamacha	ThC07, TE11
Matsuo, Masaki	WA06	Osaki, Yuma	WE09, ThC13
Matsuoka, Misato	WD11, ThB12, ThE12-V	Owen, Catherine	ThC04
Matsushita, Kazuo	WD03	Paik, Christopher	TD11, WB01
Maxwell, Robert	WE07, TD07, WB08	Paik, Keun Wook	ThC02
Mellet, Xavier	WE08	Pan, Chengxin	ThB13, WA14, TD02
Mesropyan, Meline	WB13	PANDEY, BHAVYA	TE11
MI, TINGMEI	TE12	Papageorgiou, Maria	WE14
Middleby, Solstice	WC10	Paribatra, Pinitbhand	WC01, ThB01
Mieno, Fumiharu	ThE05-V	Parida, Dr Sudhir	ThC02, ThB13
Mimaki, Seiko	ThB12	PARK, JONGSEONG	WA10
Mincheva, Lyubov G.	ThD06, ThC10	Park, Seohee Ashley	WB06
Mingjiang, Li	ThB08, ThC07	Park, Soojin	WC10, ThA03
Miole, Giselle	WA03	Parker, David	WE07
Miranda, Gleice	ThE12-V	Paul, T. V.	ThB13, TE02
Mishra, Abhishank	ThE03-V	Pham, Minh Nam	ThE06-V
Mishra, Josna	TE14	Phattharathanasut , Tuwanont	WB04
Miura, Hideyuki	WE09	Ploberger, Christian	TC06, ThE07-V
Miyashita, Hiromu	TD03-V	Polishchuk, Anastasiya	ThC04
Miyazaki, Asami	WA03	Pope, Chris	ThD09, ThA03
Mizo, Robert	ThA09	Porteux, Jonson	TD07
Mizobata, Satoshi	TD06, WA08, TC02	Power, Lauren	ThB10
Modoni, Manuel	TE02	PU, Lin (Kirin)	WC08
Mohapatra, Kiranmayee	TE14	Pueschel, Andrew	ThD13

# Index of Participants

Qiu, Xiaojuan	ThB08
Rahman, Anisur	WC12
RAHMAN, MD ARIFUR	ThA01
Rai, Tara Devi	ThC03, ThA09
Rajshekar-Falconer, Abhimanyu	WA14, ThD14-V
Rana, Chetna	WA06, WE12, TC10
Ranasinghe, Jani	TE08, ThA10
Ras, Maciej	ThA05, WD06
Rashid, Syeda Rozana	ThB04, WC08
Rasmussen, Ivan W.	TE10, TC02
Raswant, Arpit	WB06, ThC07
Reilly, Tim	ThC02
Rhee, Inbok	ThC04
Rhee, Wonkyung	ThB03, ThD10
Robles, Lisette	WE04
Roesch, Felix	ThB12, WA09, ThC09, WB08
Rosefielde, Steven S.	WA07
Rosendal Ebbesen, Tabita	WE09
Roth, Antoine	WE01
Roy, Nabarun	TE14, ThA03, WA02
Roy, Torunika	ThB12, ThC10, TE02, ThD10
Ruikai , Xue	WE14
Saeki, Shoko	TE10
Safi, Rahimullah	ThA05
Sahin, Vuslat Nur	ThB01
Sahu, Asima	WA07, WD09, ThD06
SAITO, AOI	TE12
Sakai, Hidekazu	WA14, TC02
Saludadez, Jean	TE09
SAMSON, IVAN	TE09
Sandal, Nukhet A.	TC05, WA02
Sasaki, Hazuki	WD11
Sasaoka, Yuichi	ThB05
Sato, Tsutomu	WE02
Sato, Yoichiro	WB06
Sawada, Katsumi	TD14
Scartozzi, Cesare M.	WA03, WE14, ThD13
Schreurs, Miranda	WE02
Schultz, Franziska	ThE06-V
Sedoc-Dahlberg, Betty Nelly	ThC12
Sehbag, Pooja	WE06, ThD14-V
Seo, Jungmin	TC11, TD11
Serikkaliyeva, Azhar	ThB02
Shani, Giorgio	WD09, WB08, TE02
Shao, Hsuan-lei	TE07, WA08
Shao, Li	TE01
SHAO, Tianze	ThA04
shaqale , Abdirisak mohamed	ThD10
Sheen, Greg Chih-Hsin	ThB13
Shibai, Kiyohisa	WB03
Shigemasa, Kimikazu	WC03
Shimazaki, Yuko	WE08
Shimizu, Kosuke	TC11, TD09
Shin, Dongeun	ThB12
Shinam, Reona	WC12
Shivam , Shivam	ThE01-V
Shu, Min	WE02, WB07, ThB05
Shuto, Motoko	TC05, ThA05

Singh Rathore, Khushi	WD07
Singh, Akanksha	ThC14, WE13, TD04
Singh, Dr Akanksha	TC06
Singh, Dr. Geetanjali	WC08, TC02
Singh, Prashant	ThB02
Sjoberg, Laura	TC14
Skubisz, Michał	ThA03
Smith, David	TD11
Soesilowati, Sartika	ThB08
Song, Annie Young	TC14
Stefanovic-Stambuk, Jelica	ThE03-V, WA03, ThD11, WB08
Stephen, Matthew David	ThD09, ThC09, TE11
Strating, Bec	WC04
Subramaniam, Mogana Sunthari	WE04
Suh, Kyungwon	WA07, TE01
Sun, Sibeí	ThA07
Sundhagul, Kasina	WC01, WA13
Sundrijo, Dwi Ardhanariswari	WC03
Suriyamongkol, Marjorie	TD02
Suzuki, Noriko	WB02
Tago, Atsushi	ThC14
Takahara, Akio	ThE13-V
Takahashi, Tomoko	ThE05-V
TAKARA, Tetsumi	TC05
Tamaki, Taku	ThC04, ThE06-V, TC14
TAMIMA, -	TC14
Tan, Alexander	WE06
Tan, Bann Seng	ThA07, WB04, ThC05
Tan, Wayne	WC13, ThB09, WA08
TANAKA, Hiroshi	ThD06
Taniguchi, Miyoko	WB13, ThB09
Tanoue, Maho	TE10
Temocin, Pinar	WE02, WB04
Terada, Takashi	WE09
Thorley, Lisa	ThA05, WD06
Tiberghien, Yves E.	WE02
Tonami, Aki	ThB12
Tran, Bich	ThC05
Tsai, Shu-Wei	WA08
Tsujita, Yuko	WA06
Tsukamoto, Takashi	WC01
Turcsanyi, Richard Q.	TE01
Tzinieris, Sarah	ThD14-V
Ueno, Hiroko	TE09
Ulatowski, Rafal	WC04, ThC01, TD02
Vaiphei, K Esther	TE12
Vecino, Miguel	ThD14-V
Verma, Vaibhav	ThE12-V
Vizcarra, Keindel Maha	TE06
Vortherms, Sam	ThD13
Wang, Danning	TE06
Wang, Yi-Ting	ThB13
Wang, Yuan	ThB04
Watanabe, Atsuko	ThB12, WC11, ThC09
WATANABE, Riko	WC03
Watanabe, Shino	ThB05, ThD14-V
Wijayanto, Xenia Angelica	ThA09, ThD11
Wilkins, Thomas S.	ThD11, WB10

## Index of Participants

Winanti, Kenya	TE08
Wisniewski, Rafal	WE07
Wong , James	WB04
Wu, Charles Chong-Han	TE08, WA08, ThC01
Wu, Ronald Yi Xiu	TE07, WA02
Wu, Shang Su	WA13, ThD05
Wu, Zeying	WD01
XIA, MENGHU	TE01
xu, weifang	ThC14, ThA01, WA02
Xu, You	WA08, ThC05
Yabunaga, Chino	WC10
Yadav, Priyanka	ThD09, ThC10
Yamada, Naofumi	WC11
Yamamoto, Andrei	ThD05
Yamaoka, Haruki	TE10
Yang, Joonseok	ThC04
Yasuda, Chinatsu	TE10
Yates, Robert	TD06, ThD13
Ye, Min	WD01
Yenikeyeff, Shamil	ThC02
Yeon, Wonho	WE09
Yeung, Wing Yan	ThC09
Yin, Weiwen	WE13, WA13, TD07
Yoneda, Koichi	ThD10
Yoneda, Yusaku	TE10
Yoon, Chungseun	WC13
Yoshioka, Tatsuya	TE06
You, Ji	WC04
Yuan, Xinyu	ThC13
YUKI, ABE	TE07, WB07
Yun, Dowon	ThA03
Yun, Jaeun	ThA05
Yuzawa, Takeshi	WC03
Zeng, Ka	ThD09
Zhang, Jiakun Jack	ThD13
Zhang, Jian	WC04, WA09
ZHANG, Xuebin	WA09
Zhang, Xueying	ThD11
Zhao , Xiru	WA08
Zhou, Mengdie	WA09
Zhou, Xin	WD03
Zhou, Yuan	ThC12
Ziering, Walter N.	TD02
Zu, Chunyan	TC12

# Index of Sessions by Sponsor

Conference Theme			
<b>1. Anthropocene in Asia Pacific and the World</b>			
<b>WA03:</b>	<b>Wednesday</b>	<b>9:00 AM - 10:30 AM</b>	
<b>3-406, Waseda University</b>			
Panel 5: Special Cases on Anthropocene			
<b>WC03:</b>	<b>Wednesday</b>	<b>1:30 PM - 3:00 PM</b>	
<b>3-406, Waseda University</b>			
The Nexus between Norms and Practices in ASEAN-centric Multilateralism			
<b>WD03:</b>	<b>Wednesday</b>	<b>3:15 PM - 4:45 PM</b>	
<b>3-406, Waseda University</b>			
Panel 3 : Climate Crisis: Energy Transition for Peace			
<b>ThA03:</b>	<b>Thursday</b>	<b>9:00 AM - 10:30 AM</b>	
<b>3-406, Waseda University</b>			
poster			
<b>ThC03:</b>	<b>Thursday</b>	<b>1:30 PM - 3:00 PM</b>	
<b>3-406, Waseda University</b>			
Panel 2: Anthropocene in Climate Governance			
<b>ThE03-V:</b>	<b>Thursday</b>	<b>5:00 PM - 6:30 PM</b>	
<b>3-406, Waseda University</b>			
virtual papers accepted (to be included in the dedicated 'virtual day' conference):			
<b>10. Papers of Graduate Students</b>			
<b>TC14:</b>	<b>Tuesday</b>	<b>1:30 PM - 3:45 PM</b>	
<b>3-710, Waseda University</b>			
Group 5: some other International Cooperation			
<b>TC10:</b>	<b>Tuesday</b>	<b>1:30 PM - 3:00 PM</b>	
<b>3-709, Waseda University</b>			
indo-pacific strategy			
<b>TD06:</b>	<b>Tuesday</b>	<b>3:15 PM - 4:45 PM</b>	
<b>3-701, Waseda University</b>			
Relation between Asia and Western Word			
<b>TE10:</b>	<b>Tuesday</b>	<b>5:00 PM - 6:30 PM</b>	
<b>3-709, Waseda University</b>			
poster session			
<b>TE14:</b>	<b>Tuesday</b>	<b>5:00 PM - 6:30 PM</b>	
<b>3-710, Waseda University</b>			
Group 9: Health & Population			
<b>WA14:</b>	<b>Wednesday</b>	<b>9:00 AM - 10:30 AM</b>	
<b>3-710, Waseda University</b>			
Group 6: Thoritical Perspective in International Relations			
<b>WA10:</b>	<b>Wednesday</b>	<b>9:00 AM - 10:30 AM</b>	
<b>3-709, Waseda University</b>			
Group 3: Geopolitics and Foreign Policy			
<b>WB10:</b>	<b>Wednesday</b>	<b>10:45 AM - 12:15 PM</b>	
<b>3-709, Waseda University</b>			
Group 4: Asia-Pacific			
<b>ThB14:</b>	<b>Thursday</b>	<b>10:45 AM - 12:00 PM</b>	
<b>3-710, Waseda University</b>			
Group 4: Asia-Pacific			
<b>WC10:</b>	<b>Wednesday</b>	<b>1:30 PM - 3:00 PM</b>	
<b>3-709, Waseda University</b>			
Graduate Student Papers Group 1: Diplomacy			
<b>WE14:</b>	<b>Wednesday</b>	<b>5:00 PM - 6:30 PM</b>	
<b>3-710, Waseda University</b>			
Group 8: Conflicts & Ethnicity			
<b>ThB10:</b>	<b>Thursday</b>	<b>10:45 AM - 12:15 PM</b>	
<b>3-709, Waseda University</b>			
poster session			
<b>ThC10:</b>	<b>Thursday</b>	<b>1:30 PM - 3:00 PM</b>	
<b>3-709, Waseda University</b>			
Group 2: Climate			
<b>ThD10:</b>	<b>Thursday</b>	<b>3:15 PM - 4:45 PM</b>	
<b>3-709, Waseda University</b>			
conceptualization of Indo-Pacific			
<b>ThE13-V:</b>	<b>Thursday</b>	<b>5:00 PM - 6:30 PM</b>	
<b>7-206, Waseda University</b>			
Group 3rd, 5th, 7th, 8th virtual papers			
<b>2. Covid-19 Pandemic and International Relations</b>			
<b>TE08:</b>	<b>Tuesday</b>	<b>5:00 PM - 6:30 PM</b>	
<b>3-703, Waseda University</b>			
Panel 1			
<b>WA08:</b>	<b>Wednesday</b>	<b>9:00 AM - 10:30 AM</b>	
<b>3-703, Waseda University</b>			
COVID			
<b>WB08:</b>	<b>Wednesday</b>	<b>10:45 AM - 12:15 PM</b>	
<b>3-703, Waseda University</b>			
Covid-19 Crisis and its impact in Area Studies			
<b>WC08:</b>	<b>Wednesday</b>	<b>1:30 PM - 3:00 PM</b>	
<b>3-703, Waseda University</b>			
How to end or change public policies on COVID-19: The impact on society and international relations			
<b>WE08:</b>	<b>Wednesday</b>	<b>5:00 PM - 6:30 PM</b>	
<b>3-703, Waseda University</b>			
How to end or change public policies on COVID-19: The impact on society and international relations			
<b>ThB08:</b>	<b>Thursday</b>	<b>10:45 AM - 12:15 PM</b>	
<b>3-703, Waseda University</b>			
COVID-19 and new era of Security			
<b>ThE07-V:</b>	<b>Thursday</b>	<b>5:00 PM - 6:30 PM</b>	
<b>3-702, Waseda University</b>			
New Challenges for the Post Covid-19 Southeast Asia			
<b>3. Regional Integration and Collaboration in Asia-Indo Pacific, Europe and the World</b>			
<b>TC06:</b>	<b>Tuesday</b>	<b>1:30 PM - 3:00 PM</b>	
<b>3-701, Waseda University</b>			
India: A Future Hegemon in Making			
<b>TC07:</b>	<b>Tuesday</b>	<b>1:30 PM - 3:00 PM</b>	
<b>3-702, Waseda University</b>			
Irregular Warfare in the Indo-Pacific: Concepts and Case Studies 2			
<b>TD09:</b>	<b>Tuesday</b>	<b>3:15 PM - 4:45 PM</b>	
<b>3-704, Waseda University</b>			
Bureaucracy and Globalization in the Indo-Pacific			
<b>TE09:</b>	<b>Tuesday</b>	<b>5:00 PM - 6:30 PM</b>	
<b>3-704, Waseda University</b>			
Public Diplomacy and Development			
<b>TE06:</b>	<b>Tuesday</b>	<b>5:00 PM - 6:30 PM</b>	
<b>3-701, Waseda University</b>			
Civil Society Contribution to Building Regional Peace and Stability: The Experience of Northeast Asia			
<b>WA06:</b>	<b>Wednesday</b>	<b>9:00 AM - 10:30 AM</b>	
<b>3-701, Waseda University</b>			
Asian Migration Highway: political stability, social integrity / plurality and life course of immigrants			
<b>WA09:</b>	<b>Wednesday</b>	<b>9:00 AM - 10:30 AM</b>	
<b>3-704, Waseda University</b>			
Asia Pacific Diplomacy			
<b>WB06:</b>	<b>Wednesday</b>	<b>10:45 AM - 12:15 PM</b>	
<b>3-701, Waseda University</b>			
Emerging Partnerships, Technologies, and Urgencies in the Indo-Pacific			
<b>WC06:</b>	<b>Wednesday</b>	<b>1:30 PM - 3:00 PM</b>	
<b>3-701, Waseda University</b>			
Is functional cooperation (still) possible in the Asia Pacific in areas of disaster relief and humanitarian reponse?			
<b>WD06:</b>	<b>Wednesday</b>	<b>3:15 PM - 4:45 PM</b>	
<b>3-701, Waseda University</b>			
EU and Asia Pacific			
<b>WD09:</b>	<b>Wednesday</b>	<b>3:15 PM - 4:45 PM</b>	
<b>3-704, Waseda University</b>			
Indo-Pacific Diplomacy: India, Japan, ASEAN and the UK			
<b>WE09:</b>	<b>Wednesday</b>	<b>5:00 PM - 6:30 PM</b>	
<b>3-704, Waseda University</b>			
Power Struggle over Geo-economics in the Indo-Pacific			
<b>WE06:</b>	<b>Wednesday</b>	<b>5:00 PM - 6:30 PM</b>	
<b>3-701, Waseda University</b>			
Green Regionalism and Sustainable Development in/for the Asia-Indo-Pacific			
<b>ThA10:</b>	<b>Thursday</b>	<b>9:00 AM - 10:30 AM</b>	
<b>3-709, Waseda University</b>			
international transition			
<b>ThA09:</b>	<b>Thursday</b>	<b>9:00 AM - 10:30 AM</b>	
<b>3-704, Waseda University</b>			
Refugee and Governance			
<b>ThB09:</b>	<b>Thursday</b>	<b>10:45 AM - 12:15 PM</b>	
<b>3-704, Waseda University</b>			
Paradigm Shift in East Asia			
<b>ThC09:</b>	<b>Thursday</b>	<b>1:30 PM - 3:00 PM</b>	
<b>3-704, Waseda University</b>			
Regional Integration In Asia			
<b>ThD09:</b>	<b>Thursday</b>	<b>3:15 PM - 4:45 PM</b>	
<b>3-704, Waseda University</b>			
Indo-Pacific and Trade, Development			
<b>ThD06:</b>	<b>Thursday</b>	<b>3:15 PM - 4:45 PM</b>	
<b>3-701, Waseda University</b>			
Panel 1			
<b>ThD14-V:</b>	<b>Thursday</b>	<b>3:15 PM - 4:45 PM</b>	
<b>3-710, Waseda University</b>			
Asia and Indo-Pacific			
<b>ThE12-V:</b>	<b>Thursday</b>	<b>5:00 PM - 6:30 PM</b>	
<b>7-205, Waseda University</b>			
virtual papers			
<b>ThE05-V:</b>	<b>Thursday</b>	<b>5:00 PM - 6:30 PM</b>	
<b>7-207, Waseda University</b>			
The Possibilities of Asia-Pacific Area Studies for Promoting Interdisciplinary Research			
<b>4. Security, Geopolitics, and Energy Policy</b>			
<b>TC02:</b>	<b>Tuesday</b>	<b>1:30 PM - 3:00 PM</b>	
<b>3-405, Waseda University</b>			
international security			
<b>TD02:</b>	<b>Tuesday</b>	<b>3:15 PM - 4:45 PM</b>	
<b>3-405, Waseda University</b>			
Geo- Political Uncertainty			

# Index of Sessions by Sponsor

<b>TD03-V:</b> <b>3-406, Waseda University</b> An “Asia-Pacific Way” for humanitarian crises? Regional perspectives on the concepts of the “responsibility to protect (R2P)” and “non-indifference”	<b>Tuesday</b> <b>3:15 PM - 4:45 PM</b>	<b>ThC02:</b> <b>3-405, Waseda University</b> non-alliance strategies of Asia	<b>Thursday</b> <b>1:30 PM - 3:00 PM</b>	<b>TD11:</b> <b>7-212, Waseda University</b> Panel 5: Religion, Governance, and Securitization of Others	<b>Tuesday</b> <b>3:15 PM - 4:45 PM</b>
<b>TE02:</b> <b>3-405, Waseda University</b> Cooperation and competition in Indo-Pacific Region	<b>Tuesday</b> <b>5:00 PM - 6:30 PM</b>	<b>ThC01:</b> <b>3-404, Waseda University</b> Panel 13: diverse theoretical approaches to regional security	<b>Thursday</b> <b>1:30 PM - 3:00 PM</b>	<b>TE11:</b> <b>7-212, Waseda University</b> Alliance Development	<b>Tuesday</b> <b>5:00 PM - 6:30 PM</b>
<b>TE01:</b> <b>3-404, Waseda University</b> Panel 3 Regional responses to China's rise	<b>Tuesday</b> <b>5:00 PM - 6:30 PM</b>	<b>ThC05:</b> <b>7-207, Waseda University</b> alliance dilemma and Indo-Pacific	<b>Thursday</b> <b>1:30 PM - 3:00 PM</b>	<b>WC11:</b> <b>7-212, Waseda University</b> 2):- Engineering Global Resilience: Adaption, Renewal, and Self-transformation	<b>Wednesday</b> <b>1:30 PM - 3:00 PM</b>
<b>WA02:</b> <b>3-405, Waseda University</b> US military Engagements in Asia	<b>Wednesday</b> <b>9:00 AM - 10:30 AM</b>	<b>ThD05:</b> <b>7-207, Waseda University</b> panel 27	<b>Thursday</b> <b>3:15 PM - 4:45 PM</b>	<b>WD11:</b> <b>7-212, Waseda University</b> 1):- Engineering Global Resilience: Adaption, Renewal, and Self-transformation	<b>Wednesday</b> <b>3:15 PM - 4:45 PM</b>
<b>WB03:</b> <b>3-406, Waseda University</b> Indo-Pacific Region	<b>Wednesday</b> <b>10:45 AM - 12:15 PM</b>	<b>ThE06-V:</b> <b>3-701, Waseda University</b> Panal 1	<b>Thursday</b> <b>5:00 PM - 6:30 PM</b>	<b>ThD11:</b> <b>7-212, Waseda University</b> Panel 4: Ethnic Conflicts and Political Communication	<b>Thursday</b> <b>3:15 PM - 4:45 PM</b>
<b>WB02:</b> <b>3-405, Waseda University</b> Panel 2: Alliance Dilemma and US-Japan alliance	<b>Wednesday</b> <b>10:45 AM - 12:15 PM</b>	<hr/> <b>5. Democracy and Authoritarianism; The Russo-Ukrainian War &amp; the Crisis in East Asia</b>			
<b>WB01:</b> <b>3-404, Waseda University</b> Panel 7: Empire, Borders, Refugees	<b>Wednesday</b> <b>10:45 AM - 12:15 PM</b>	<b>TD07:</b> <b>3-702, Waseda University</b> Constructivism Approach	<b>Tuesday</b> <b>3:15 PM - 4:45 PM</b>	<b>7. Gender Studies</b>	
<b>WC01:</b> <b>3-404, Waseda University</b> Hedging against Goliaths?: Small States and Strategic Uncertainties of the Asia-Indo-Pacific Countries in the Post Covid-19 Era	<b>Wednesday</b> <b>1:30 PM - 3:00 PM</b>	<b>TE07:</b> <b>3-702, Waseda University</b> 1) Taiwan Crisis and China	<b>Tuesday</b> <b>5:00 PM - 6:30 PM</b>	<b>TC12:</b> <b>7-205, Waseda University</b> Panel 2: Economic Growth and Women's work/labor in Asia Chair Yoshie HORI, Discussant Fumie Ohashi	<b>Tuesday</b> <b>1:30 PM - 3:00 PM</b>
<b>WC04:</b> <b>3-606, Waseda University</b> China-US Rivalry: heading towards new Cold War?	<b>Wednesday</b> <b>1:30 PM - 3:00 PM</b>	<b>WA07:</b> <b>3-702, Waseda University</b> Thinking about US-China relations and the international order from the US perspective	<b>Wednesday</b> <b>9:00 AM - 10:30 AM</b>	<b>TE12:</b> <b>7-205, Waseda University</b> Panel 5: Lived Experiences of Chinese Women under Globalization: Focusing on their Struggles and Negotiations	<b>Tuesday</b> <b>5:00 PM - 6:30 PM</b>
<b>WD01:</b> <b>3-404, Waseda University</b> Panel 6: China, peacekeeping, international cooperation	<b>Wednesday</b> <b>3:15 PM - 4:45 PM</b>	<b>WB07:</b> <b>3-702, Waseda University</b> China Studies	<b>Wednesday</b> <b>10:45 AM - 12:15 PM</b>	<b>WC12:</b> <b>7-205, Waseda University</b> Panel 1: Global Economy, Patriarch and Gender in South Asia Chair:Parveen Kumar Nimbrayan, Discussant Khushi Singh Rathore	<b>Wednesday</b> <b>1:30 PM - 3:00 PM</b>
<b>WE01:</b> <b>3-404, Waseda University</b> Panel 2: Alliance Dilemma and US-Japan alliance	<b>Wednesday</b> <b>5:00 PM - 6:30 PM</b>	<b>WC07:</b> <b>3-702, Waseda University</b> The impact of economic sanctions on EU, japan, and China	<b>Wednesday</b> <b>1:30 PM - 3:00 PM</b>	<b>WD12:</b> <b>7-205, Waseda University</b> Panel 3: Global Governance and Global issues and Gender	<b>Wednesday</b> <b>3:15 PM - 4:45 PM</b>
<b>WE02:</b> <b>3-405, Waseda University</b> Governance and geopolitics of energy transition in Asia and beyond	<b>Wednesday</b> <b>5:00 PM - 6:30 PM</b>	<b>WD07:</b> <b>3-702, Waseda University</b> China and Human Rights	<b>Wednesday</b> <b>3:15 PM - 4:45 PM</b>	<b>WE12:</b> <b>7-205, Waseda University</b> poster	<b>Wednesday</b> <b>5:00 PM - 6:30 PM</b>
<b>ThA01:</b> <b>3-404, Waseda University</b> Panel 11: Nuclear weapons, space, cyber and deterrence	<b>Thursday</b> <b>9:00 AM - 10:30 AM</b>	<b>WE07:</b> <b>3-702, Waseda University</b> Small and Medium-sized Countries in the Ukraine Crisis	<b>Wednesday</b> <b>5:00 PM - 6:30 PM</b>	<b>ThB12:</b> <b>7-205, Waseda University</b> Panel 6: Where are they? Women and gender minorities in politics in East Asia	<b>Thursday</b> <b>10:45 AM - 12:15 PM</b>
<b>ThB01:</b> <b>3-404, Waseda University</b> Panel 10: Terrorism, Cyber security failed states	<b>Thursday</b> <b>10:45 AM - 12:15 PM</b>	<b>ThA07:</b> <b>3-702, Waseda University</b> 2) International Relation in northeast Asia	<b>Thursday</b> <b>9:00 AM - 10:30 AM</b>	<b>ThC12:</b> <b>7-205, Waseda University</b> Panel 9: Politics and Gender Gap	<b>Thursday</b> <b>1:30 PM - 3:00 PM</b>
<b>ThB03:</b> <b>3-406, Waseda University</b> Digital Transformation in International Relations: Opportunities, Challenges, and Solutions	<b>Thursday</b> <b>10:45 AM - 12:15 PM</b>	<b>ThB05:</b> <b>7-207, Waseda University</b> International Cooperation in Asia	<b>Thursday</b> <b>10:45 AM - 12:15 PM</b>	<b>ThE01-V:</b> <b>3-404, Waseda University</b> Panel 1: International Relations and Gender Chair Yoshie HORI, Discussant Yukiko Kumamoto	<b>Thursday</b> <b>5:00 PM - 6:30 PM</b>
<b>ThB02:</b> <b>3-405, Waseda University</b> Panel 4: Regional Responses to the Changing Xi Jinping’s Foreign Policy in Indo-Pacific: Realignments, Strategic Adjustment and Institutional Balancing.	<b>Thursday</b> <b>10:45 AM - 12:15 PM</b>	<b>ThC07:</b> <b>3-702, Waseda University</b> Private Military and security	<b>Thursday</b> <b>1:30 PM - 3:00 PM</b>	<hr/> <b>8. History of War and Peace</b>	
<b>ThC14:</b> <b>3-710, Waseda University</b> Panel 12: Experimental Approaches to International Relations of the Asia-Indo-Pacific	<b>Thursday</b> <b>1:30 PM - 3:45 PM</b>	<b>6. Religion and Philosophy</b>		<b>TC05:</b> <b>7-207, Waseda University</b> Reconciliation and Peace in East Asia especially Ryukyu governance	<b>Tuesday</b> <b>1:30 PM - 3:00 PM</b>
		<b>TC11:</b> <b>7-212, Waseda University</b> Religiosity/religious thought/religious actors in East Asian (international) politics	<b>Tuesday</b> <b>1:30 PM - 3:00 PM</b>		

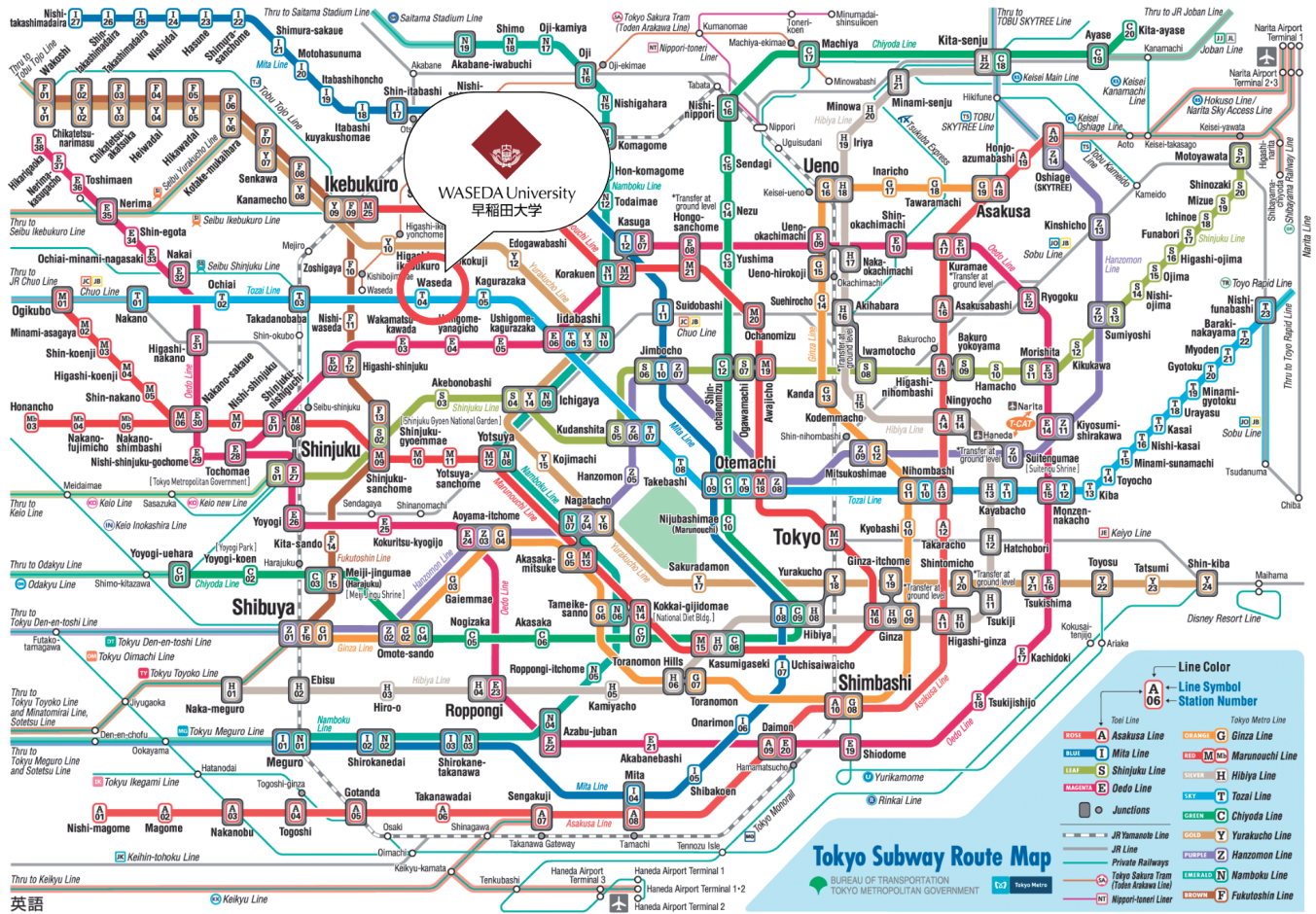
# Index of Sessions by Sponsor

<b>TD14:</b>	<b>Tuesday</b>	<b>3:15 PM - 4:45 PM</b>	<b>ThC04:</b>	<b>Thursday</b>	<b>1:30 PM - 3:00 PM</b>
<b>3-710, Waseda University</b>			<b>3-606, Waseda University</b>		
The Politics of Memory and Civil Society: Toward a New Analytical Framework for the Korean–Japanese Conflict			Foreign Direct Investment, Business and Development Interest in the Global South		
<b>TE05:</b>	<b>Tuesday</b>	<b>5:00 PM - 6:30 PM</b>			
<b>7-207, Waseda University</b>					
In Pursuit of Historical Reconciliation in East Asia: Analysis from the Perspective of Postcolonialism					
<b>TE13:</b>	<b>Tuesday</b>	<b>5:00 PM - 6:30 PM</b>			
<b>7-206, Waseda University</b>					
indo-pacific strategies for peace					
<b>WA13:</b>	<b>Wednesday</b>	<b>9:00 AM - 10:30 AM</b>			
<b>7-206, Waseda University</b>					
War and Peace in China and Taiwan Question					
<b>WB13:</b>	<b>Wednesday</b>	<b>10:45 AM - 12:15 PM</b>			
<b>7-206, Waseda University</b>					
War in South East Asia					
<b>WC13:</b>	<b>Wednesday</b>	<b>1:30 PM - 3:00 PM</b>			
<b>7-206, Waseda University</b>					
US and War in Southeast Asia					
<b>WE13:</b>	<b>Wednesday</b>	<b>5:00 PM - 6:30 PM</b>			
<b>7-206, Waseda University</b>					
War and Conflict in East Asia and Japan					
<b>ThA05:</b>	<b>Thursday</b>	<b>9:00 AM - 10:30 AM</b>			
<b>7-207, Waseda University</b>					
Regional Integration Organizations in ASIA					
<b>ThB13:</b>	<b>Thursday</b>	<b>10:45 AM - 12:15 PM</b>			
<b>7-206, Waseda University</b>					
Great Powers and Asia-Indo Pacific					
<b>ThC13:</b>	<b>Thursday</b>	<b>1:30 PM - 3:00 PM</b>			
<b>7-206, Waseda University</b>					
Peace Building and Peace Agreements					
<b>ThD13:</b>	<b>Thursday</b>	<b>3:15 PM - 4:45 PM</b>			
<b>7-206, Waseda University</b>					
cross- cultural collaboration					

## 9. Others: Japanology, Global South, Latin America

<b>TD04:</b>	<b>Tuesday</b>	<b>3:15 PM - 4:45 PM</b>
<b>3-606, Waseda University</b>		
Reassessing Policies of Humanitarianism, displacement and Refugees in Asia and the Pacific		
<b>WB04:</b>	<b>Wednesday</b>	<b>10:45 AM - 12:15 PM</b>
<b>3-606, Waseda University</b>		
Grassroots Activism, Human Rights and Democracy in the Global South and Beyond: Linking History , culture and Politics		
<b>WE04:</b>	<b>Wednesday</b>	<b>5:00 PM - 6:30 PM</b>
<b>3-606, Waseda University</b>		
Theory and practice of humanitarianism towards displaced people under humanitarian crises from the perspectives of Asia and Pacific		
<b>ThA04:</b>	<b>Thursday</b>	<b>9:00 AM - 10:30 AM</b>
<b>3-606, Waseda University</b>		
poster sessions		
<b>ThB04:</b>	<b>Thursday</b>	<b>10:45 AM - 12:15 PM</b>
<b>3-606, Waseda University</b>		
Trust, Hope, Truth: Toward International Organizations, Multinational Corporations, and Global Southern Commitments.		





# Waseda University accommodation Access Map

## Explanatory Notes

- University Grounds
- JR Line, Station
- Post Office
- Super Market
- Shinto Shrine
- Subway Station
- Police Station or Police Box
- Bank
- Restaurant
- School

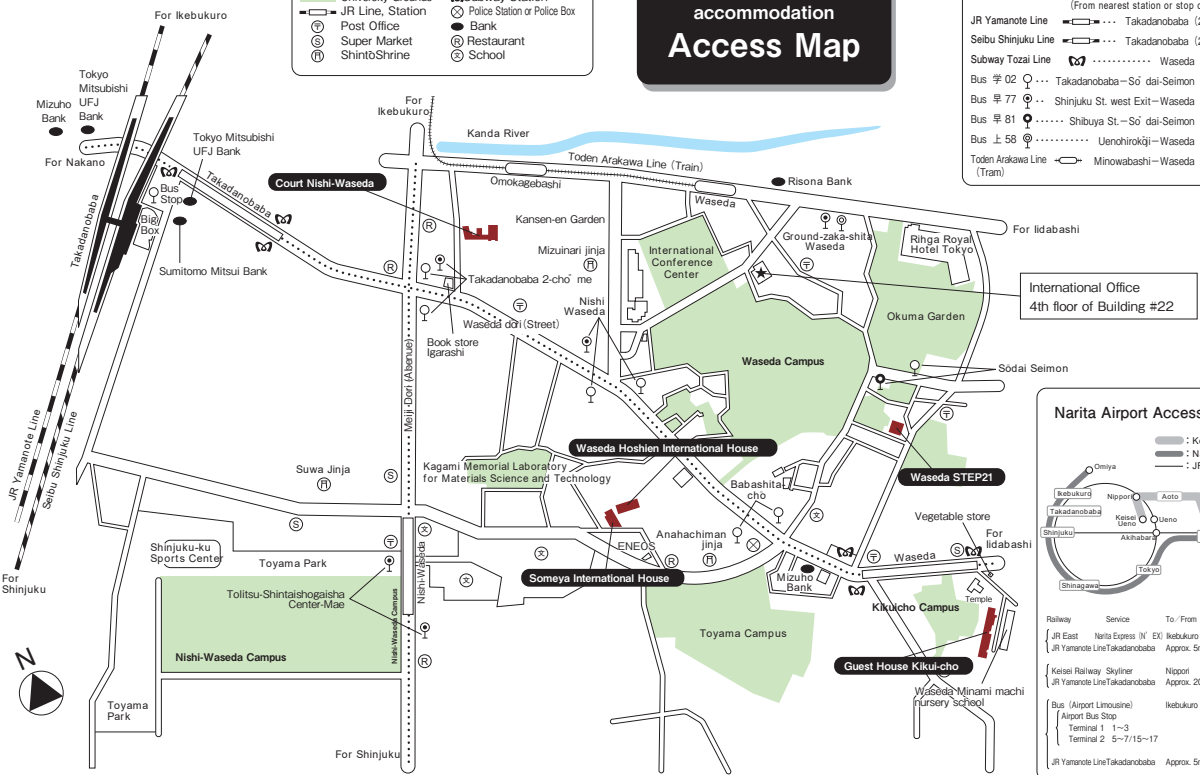
## Public Transportation to the Main Campus

- (From nearest station or stop on foot)
- JR Yamanote Line: Takadanobaba (20min.)
  - Seibu Shinjuku Line: Takadanobaba (20min.)
  - Subway Tozai Line: Waseda (5min.)
  - Bus 学 02: Takadanobaba-Sō dai-Seimon (1min.)
  - Bus 早 77: Shinjuku St. west Exit-Waseda (3min.)
  - Bus 早 81: Shibuya St.-Sō dai-Seimon (1min.)
  - Bus 上 58: Uenohirokaji-Waseda (3min.)
  - Toden Arakawa Line: Minowabashi-Waseda (5min.) (Tram)

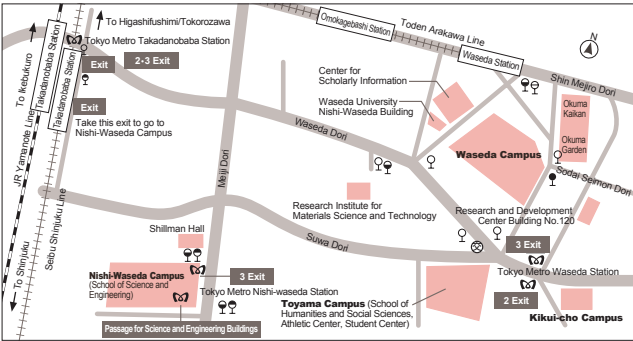
## Narita Airport Access Network



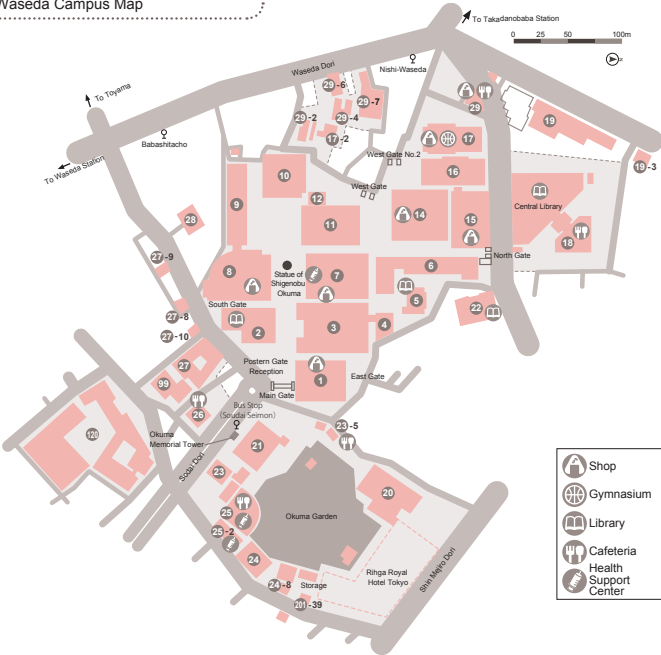
Railway	Service	To / From	Traveling Time
JR East	Narita Express	Nippori	Approx. 90min
JR Yamanote Line	Takadanobaba	Approx. 5min	
Keisei Railway	Skyliner	Nippori	Approx. 55min
JR Yamanote Line	Takadanobaba	Approx. 20min	
Bus (Airport Limousine)	Airport Bus Stop	Ikebukuro	Approx. 85min
Terminal 1	1-3		
Terminal 2	5-7/15-17		
JR Yamanote Line	Takadanobaba	Approx. 5min	



Waseda University - Waseda Campus Map



- |    |   |      |   |
|----|---|------|---|
| 1  | Admissions Center   | 12   | under construction  |
|    | Office of Academic Promotion  | 14   | School of Social Sciences   |
|    | Institute for Research in Contemporary Political & Economic Affairs |      | Graduate School of Social Sciences  |
| 2  | S. Takata Memorial Research Library                                 |      | Graduate School of Education  |
|    | University Archives   | 15   | Institute for Advanced Studies in Education                                 |
|    | Aizu Museum   | 16   | Common Classrooms   |
| 3  | School of Political Science & Economics                             | 17   | School of Education   |
|    | Graduate School of Political Science                                | 16   | Gymnasium, CO-OP  |
|    | Graduate School of Economics  | 17-2 | Kansenryō (the site of a training camp)                                     |
|    | The Okuma School of Public Management                               |      | Center for Scholarly Information  |
| 4  | School of Political Science & Economics                             |      | (Central Library, International Conference Center, Masaru Ibuka Auditorium) |
| 5  | Tsubouchi Memorial Theatre Museum                                   | 19   | Institute of Asia-Pacific Studies   |
| 6  | School of Education   |      | Graduate School of Asia-Pacific Studies                                     |
|    | Information Technology Center                                       | 20   | Okuma Kaikan ( Central Administration )                                     |
| 7  | Office for Promotion of Gender Equality                             | 21   | Okuma Auditorium  |
|    | Common Classrooms   | 22   | International Center  |
| 8  | School of Law   |      | Center for International Education  |
|    | Common Classrooms   |      | International Office, International Division                                |
|    | Graduate School of Law  |      | Institute of Language Teaching  |
|    | Institute of Comparative Law  |      | Center for Japanese Language  |
| 9  | Common Classrooms   |      | Graduate School of Japanese Applied Linguistics                             |
| 10 | Common Classrooms   | 23   | Extension Center (Main Building)  |
| 11 | School of Commerce  | 23-5 | Uni. Shop & Cafe 125  |
|    | Graduate School of Commerce   | 24   | Media Network Center  |
|    | Graduate School of Accountancy                                      |      | Digital Campus Promotion Office   |
|    | Institute of Research in Business Administration                    | 24-8 | Harassment Prevention Committee   |
|    | School of International Liberal Studies                             |      |   |



- |             |                                       |               |   |
|-------------|---------------------------------------|---------------|---|
| <b>25</b>   | Okuma Garden House                    | <b>29-6</b>   | Faculty Offices   |
| <b>25-2</b> | University Clinic                     | <b>29-7</b>   | Global Information and Telecommunication Institute        |
| <b>26</b>   | Okuma Memorial Tower                  |               | Graduate School of Global and Telecommunication Institute |
|             | The Okuma School of Public Management | <b>99</b>     | Waseda STEP 21  |
|             | 125th Anniversary Room                |               | Art and Architecture School                               |
|             | Cultural Planning Section             |               | Guest House   |
| <b>27</b>   | Information Square                    | <b>120</b>    | Research and Development Center                           |
|             | Waseda Law School                     | <b>210-39</b> | Volunteer Center  |
|             | Ono Memorial Hall                     |               |   |
|             | Waseda Gallery                        |               |   |
| <b>27-9</b> | Waseda Drama Hall                     |               |   |
| <b>29</b>   | CO-OP Union for faculty and Staff     |               |   |
| <b>29-2</b> | Extension Center (Annex)              |               |   |
| <b>29-4</b> | Faculty Offices                       |               |   |

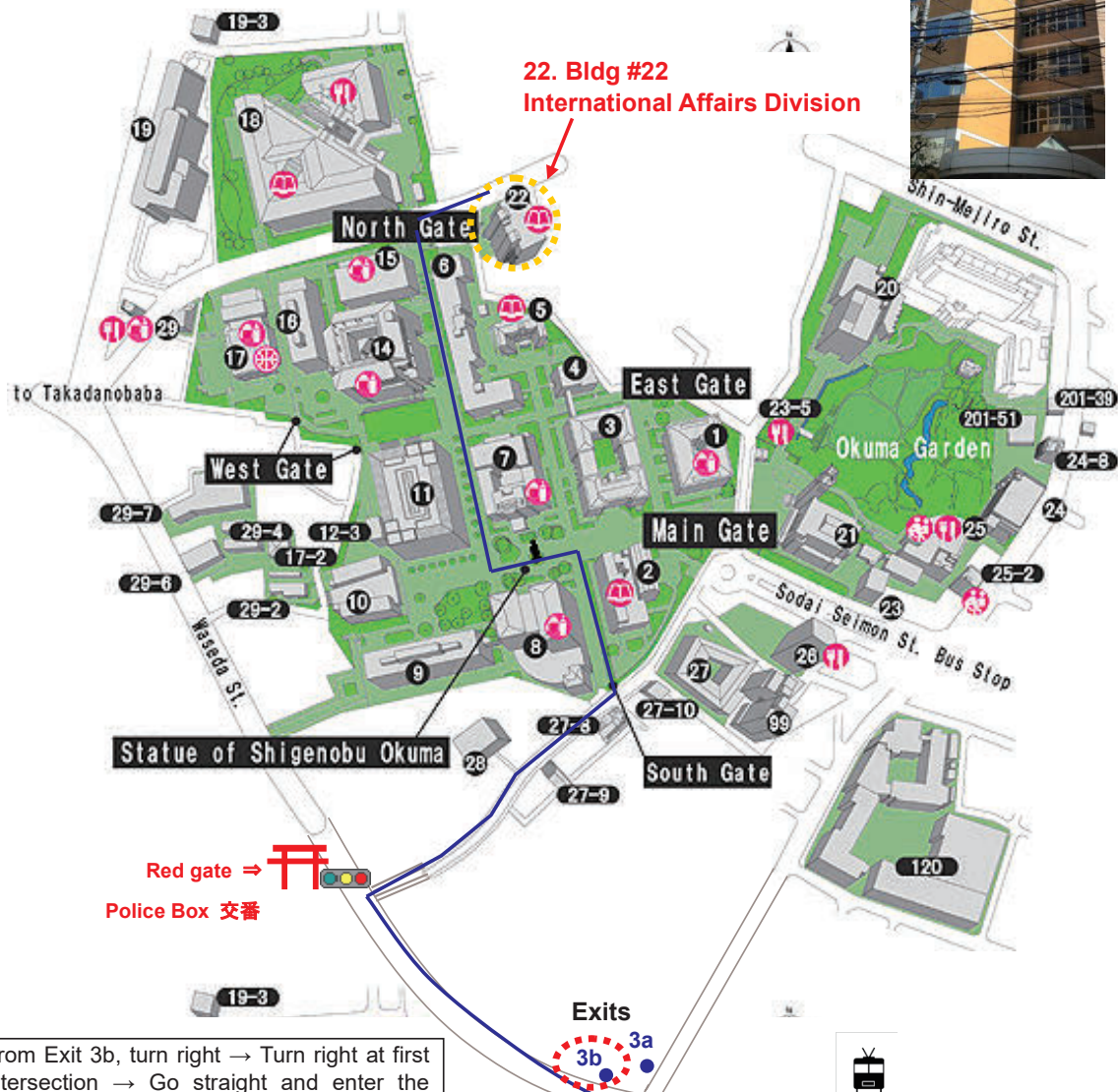
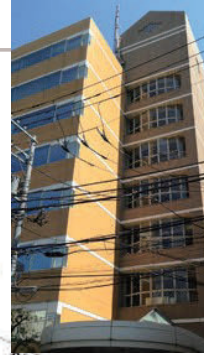
# Waseda University Campus Map

早稲田大学 早稲田キャンパス

Waseda University Bldg. 22

Address : 1-7-14 Nishi-Waseda, Shinjuku-ku

※Yellow building near north gate



Tokyo Metro Tozai Line  
Waseda Station

From Exit 3b, turn right → Turn right at first intersection → Go straight and enter the campus from the South Gate on your left → Turn left at the statue → Turn right just past the statue and walk straight and **out of the North Gate** → Turn right and walk until you see a yellow building on your right-hand side.

## Information from Waseda University (Host)

( 1 ) Waseda University Waseda Campus

1-6-1, Nishiwaseda, Shinjuku-ku, Tokyo, 1690051

**The Reception Desk is 4th floor of Bldg.3**

↓ You can see the Campus Map through this QR code.



(2) Access

① From Narita International Airport

By train: JR Narita-Express to Shinjuku Station, about 85 minutes

By bus: Limousine Bus to Shinjuku Station, about 85 minutes

In either case, take the Ikebukuro-bound JR Yamanote-Line from Shinjuku and get down at Takadanobaba Station.

② From Tokyo International Airport(Haneda)

By train: Tokyo Monorail to Hamamatsucho-Station (JR Yamanote Line), about 25 minutes  
or, Keikyū Airport Line Express to Shinagawa Station, about 25 minutes,

In either case, get down at Takadanobaba Station, about 30 minutes by JR Yamanote Line.

③ From Tokyo Station

By train about 5 minutes' walk to Otemachi Station (Tokyo Metro Tozai Line), take the train bound for Nakano or Mitaka and get down at Waseda Station

By taxi, about 20 minutes

④ Takadanobaba Station (JR Yamaote Line), exit the ticket gate and turn right and take the "Waseda Univ" bus at rotary about 10 minutes. Get off at the end of the bus stop, you will see the main gate of Waseda University.

⑤ 5 minutes walk from Ex 3a, Waseda Station, Tokyo Metro Subway.

( 2 ) The Reception Desk

**Waseda Campus, Bldg 3, 4<sup>th</sup> floor.** please ask the reception desk about each room on the day of the session.



### ( 3 ) Lunch & café

There are convenience stores on the First floor on Bldg.3 and Bldg.11. You can buy and eat near these stores. The cafeteria on campus is closed.

Please scan the QR code below for a map of cafes around the university.



### ( 4 ) About Free Wi-Fi

At Waseda University you can use the eduroam wi-fi. To use the eduroam wi-fi, please connect to “eduroam” from the Wi-Fi settings of your phone or pc. After that, enter your Username and Password and you’ll be connected.



### ( 5 ) About the Reception

There will be a reception on Wednesday, Aug 9th from 19:10 at Royal Hall, 3d Floor, RIHGA Royal Hotel Tokyo. Please go out the main gate in front of Waseda Bldg.3 and turn left. There will be staff standing by to give you direction.

- Google map for RIHGA Royal Hotel

<https://goo.gl/maps/hMarBcRyB72gadsV8>

- Homepage of RIHGA Royal Hotel

<https://www.rihga.com/tokyo>

address:1-104-19, Totsukamachi, Shinjuku-ku, Tokyo, 169-8613 Japan

Phone 81(0)3-5285-1121

( 6 ) Others

The conference secretariat and staff will not be able to respond to any requests for photocopies of materials related to the report, resumes, etc. If you need photocopies, please use a convenience store near the university. If you had any trouble with the PC operation, please ask the staff in each room.



## Get Read

[springer.com](https://www.springer.com)

## Publish With Springer & Palgrave Macmillan

- Expert guidance and personalized support
- Your content in every format: eBook, print book, MyCopy
- Rapid distribution with global reach
- Santoro: Brazil–China Relations in the 21st Century - The Making of a Strategic Partnership
- Chu, Park: Immigration Policy and Crisis in the Regional Context - Asian and European Experiences
- Davis: The Geopolitics of Melting Mountains - An International Political Ecology of the Himalaya
- Nakamura, Wright: Japan and the Middle East - Foreign Policies and Interdependence
- Nye: Soft Power and Great-Power Competition - Shifting Sands in the Balance of Power Between the United States and China
- Inoguchi, Le: Digitized Statecraft of Four Asian Regionalisms - States' Multilateral Treaty Participation and Citizens' Satisfaction with Quality of Life
- Haba, Canavero, Mizobata: 100 Years of World Wars and Post-War Regional Collaboration - How to Create 'New World Order'?
- Haba, Holland: Brexit and After - Perspectives on European Crises and Reconstruction from Asia and Europe



# 米国連邦政府機密指定解除文書 オンラインデータベース **U.S. Declassified Documents Online**

**アメリカ政府の機密指定解除文書 750,000 ページ超を搭載!!**


本データベースは、アメリカ連邦政府が発行した文書のうち、機密指定の解除された文書を搭載、フルテキスト検索を実現したものです。**約 15 万件、750,000 ページを超える**政府文書へのアクセスが可能です(毎年サプLEMENTとして約 5,000 件の文書が追加されています)。第二次世界大戦期から 21 世紀までの主要な政策問題をカバーする連邦政府省庁の機密指定解除文書を提供するコレクションとしては最大規模を誇る電子リソースです。**Supplement 2023 は 2023 年 12 月リリース予定**です。

## アメリカの安全保障、外交政策の舞台裏における 最高レベルの意思決定を明るみに出す文書群

収録文書は、国務省、国防総省、CIA、FBI、国家安全保障会議、ホワイトハウス等、アメリカ連邦政府の中枢機関において機密指定された諜報文書、政策文書、外交書簡、閣議議事録、軍事レポート等の文書群です。第二次世界大戦、東西冷戦、朝鮮戦争、キューバ危機、植民地の独立、ベトナム戦争、国際貿易紛争、核拡散、中東紛争、テロリズムなど、超大国アメリカが関わった国際問題から、マッカーシズム、公民権運動、反戦運動、権力乱用、汚職など、アメリカ国内の政治問題まで、本データベースは、アメリカ政府関連文書の中でも最高度に重要な文書群を収録、アメリカの安全保障や外交に関する政策形成過程の舞台裏における最高レベルの意思決定を明るみに出すものとして、学術研究への寄与は計り知れません。また、米国の政策形成過程を理解することにとどまらず、米国と外交関係を有する国々が現在抱える様々な問題を正しく理解し、解決策を与えるための基礎資料です。


**無料トライアル申し受けます！詳細は弊社までお申し付け下さい**

日本指定代理店 **極東書店**

**FAR EASTERN BOOKSELLERS**  
 KYOKUTO SHOTEN LTD

 〒101-8672 東京都千代田区神田三崎町 2-7-10 帝都三崎町ビル  
 〒600-8357 京都市下京区柿本町 579 五条堀川ビル  
 〒810-0073 福岡市中央区舞鶴 1-3-14 小椋ビル

 03(3265)7531 FAX (3556)3761  
 075(353)2093 FAX (353)2096  
 092(751)6956 FAX (741)0821

 URL: <https://www.kyokuto-bk.co.jp>

 E-mail: [info@kyokuto-bk.co.jp](mailto:info@kyokuto-bk.co.jp)




## 日本の国際協力 アジア編

経済成長から「持続可能な社会」の実現へ

Japan's International Cooperation in Asia:

From economic growth to the realization of a "sustainable society"

重田 康博 / 太田 和宏 / 福島 浩治 / 藤田 和子 編著

A5判/314 ページ 定価 4,180 円(本体 3,800 円+税) 2021 年 6 月刊行



## 同盟の起源

国際政治における脅威への均衡

The Origin of Alliance

Balancing Threats in International Politics

ステイーヴン・M・ウォルト 著 今井 宏平 / 溝渕 正季 訳

A5判/450 ページ 定価 6,050 円(本体 5,500 円+税) 2021 年 12 月刊行



## 国際政治から考える 東アジア共同体

East Asian Community, considering from the International Politics

山本 吉宣 / 羽場 久美子 / 押村 高 編著

A5判/320 ページ 定価 3,520 円(本体 3,200 円+税) 2012 年 4 月刊行



## 台湾有事のシナリオ

日本の安全保障を検証する 重版出来

Taiwan Emergency scenario, verifying Japanese Security

森本 敏 / 小原 凡司 編著

四六判/352 ページ 定価 3,850 円(本体 3,500 円+税) 2022 年 1 月刊行



## 論点・ジェンダー史学

重版決定

Issues of Gender History

山口 みどり / 弓削 尚子 / 後藤 絵美 / 長 志珠絵 / 石川 照子 編著

B5判/320 ページ 定価 3,520 円(本体 3,200 円+税) 2023 年 6 月刊行



## 戦争の世界史

World history of war

マイケル・S・ナイバーク 著 南塚 信吾 / 秋山 晋吾 監修

四六判/228 ページ 定価 2,860 円(本体 2,600 円+税) 2022 年 11 月刊行



ご注文は書店または [www.minervashobo.co.jp/](http://www.minervashobo.co.jp/)へ

お問い合わせは ミネルヴァ書房 東京 営業部 [tokyo@minervashobo.co.jp](mailto:tokyo@minervashobo.co.jp) または

TEL.03-3525-8460/FAX.03-3525-8461 へ



ミネルヴァ書房

(本社) 京都市山科区日ノ岡堤谷町 1 TEL. 075-581-0296 FAX. 075-581-0589

(東京) 東京都千代田区神田駿河台 3-6-1 菱和ビルディング 2 階

TEL. 03-3525-8460

FAX. 03-3525-8461

<http://www.minervashobo.co.jp>

To researchers attending ISA Asia-Pacific 2023 Conference,

It is our great pleasure to celebrate the ISA Asia-Pacific 2023 Conference.

Relating the theme of this conference, “Global Role of Asia-Indo Pacific in International Relations: Anthropocene, Peace and Security”, Maruzen Publishing has published many encyclopedias of culture, politics and societies in certain regions, e.g. India, China, Middle East and Central Asia, Southeast Asia, Central and Eastern Europe and so on.

We believe that the culture, the constructions of human beings, can be understood only by studying generally with politics, society, arts, religions and so on. For this purpose, regional and transnational points of view will be important. I suppose this is also critical for the International Relation Studies.

[some line-ups]

- Encyclopedia of Central and Eastern European Culture  
(中欧・東欧文化事典, Editorial Chief: Kumiko HABA, ISBN 978-4-621-30616-1)
- Encyclopedia of Indian Cultures  
(インド文化事典, Editorial Chief: Yoshio, SUGIMOTO, ISBN978-4-621-30235-4)
- Encyclopedia of Central Eurasian Culture  
(中央ユーラシア文化事典, Editorial Chief: Hisao KOMATSU, ISBN978-4-621-30806-6)
- Encyclopedia of Southeast Asian Culture  
(東南アジア文化事典, Editorial Chief: Nobuhiro SHINODA, ISBN 978-4-621-30390-0)
- Encyclopedia of Chinese Culture  
(中国文化事典, Editorial Chief: Akira TAKEDA, ISBN 978-4-621-30117-3)
- Encyclopedia of American Culture  
(アメリカ文化事典, Edited by Japanese Association for American Studies, ISBN 978-4-621-30214-9)
- Encyclopedia of Peace Studies  
(平和学事典, Edited by Peace Studies Association of Japan, ISBN 978-4-621-30808-0)
- Encyclopedia of Cultural Anthropology  
(文化人類学事典, Edited by Japanese Society of Cultural Anthropology)
- Encyclopedia of EU(Now Editing: forthcoming on 2024~2025)  
\*Every book is written in Japanese.

For further information, please check our website: <https://www.maruzen-publishing.co.jp/>

Best Regard,

Editorial Staff of *Encyclopedia of Central and Eastern European Culture* (Maruzen Publishing)

Cambridge University Press.

-

A link has been created, please let us know.

[https://issuu.com/academicpublishing/docs/2023-politics international relations-catalogue-](https://issuu.com/academicpublishing/docs/2023-politics-international-relations-catalogue)

It is a catalog called Politics & International Relations Catalog 2023 posted on the site called ISSUU.

We would appreciate it if you could let us know so that you can download the PDF as well as view it on this site.

-

Best regard.

-

Cambridge University Press, Satomi Waki  
Sales Support Executive, Academic, Japan,  
Cambridge University Press co.

Cambridge University Press Book Shop

<https://www.cambridgebookshop.co.uk/>